



STATE AND REGIONAL INDICATORS

VICTORIA

EMBARGO: 11:30AM (CANBERRA TIME) TUES 19 FEB 2002

CONTENTS

Notes	2
Overview	3

TABLES

List of tables	14
Summary of statistical indicators: State comparison	16
State final demand	17
Population	19
Labour market	20
Price indexes	27
Business expectations	31
Finance	32
Construction	38
Motor vehicle registrations	46
Retail	49
Tourism	51
Production	52
Trade	54
Natural resources	56

- For further information about these and related statistics, contact the National Information and Referral Service on 1300 135 070, or James Darragh on Melbourne 03 9615 7476.

NOTES

FORTHCOMING ISSUES	<p><i>ISSUE</i></p> <p>March 2002</p> <p>June 2002</p>	<p><i>RELEASE DATE</i></p> <p>7 May 2002</p> <p>6 August 2002</p>
SEASONAL ADJUSTMENT	<p>Seasonal adjustment is a means of removing the estimated effects of normal seasonal variations from economic time series so that the effects of other influences are obvious. Seasonal variations are the systematic (though not necessarily regular) intra-year movements of economic time series. These are often the result of non-economic phenomena, such as climatic changes and regular religious festivals, e.g. Christmas and Easter.</p>	
TREND ESTIMATE	<p>Smoothing seasonally adjusted series produces a measure of trend by removing the impact of the irregular component of the series. The trend estimates are derived by applying a 13-term Henderson weighted moving average to the respective seasonally adjusted series. Readers are reminded that trend estimates are subject to revision as subsequent months' data become available.</p>	
CHANGES IN THIS ISSUE	<p>There are no changes in this issue.</p>	
SYMBOLS AND OTHER USAGES	<p>AHECC Australian Harmonised Export Commodity Classification</p> <p>ANZSIC Australian and New Zealand Standard Industrial Classification</p> <p>ML Megalitres</p> <p>MSR Major Statistical Region</p> <p>n.a. not available</p> <p>n.e.c. not elsewhere classified</p> <p>n.e.s. not elsewhere specified</p> <p>n.p. not available for publication but included in totals where applicable</p> <p>n.y.a. not yet available</p> <p>p preliminary — figure or series subject to revision</p> <p>r figure or series revised since previous issue</p> <p>SITC Standard International Trade Classification</p> <p>* estimate has a relative standard error greater than 25% and is therefore subject to sampling variability too high for most practical uses</p> <p>. . not applicable</p> <p>— nil or rounded to zero</p>	
EXPLANATORY NOTES	<p>The statistics shown are the latest available as at 7 January 2002. Explanatory Notes in the form found in other ABS publications are not included in State and Regional Indicators, Victoria. Readers are directed to the Explanatory Notes contained in related ABS publications.</p>	
INQUIRIES	<p>For information about other ABS statistics and services, please refer to the back of this publication.</p>	

Vince Lazzaro
Regional Director, Victoria

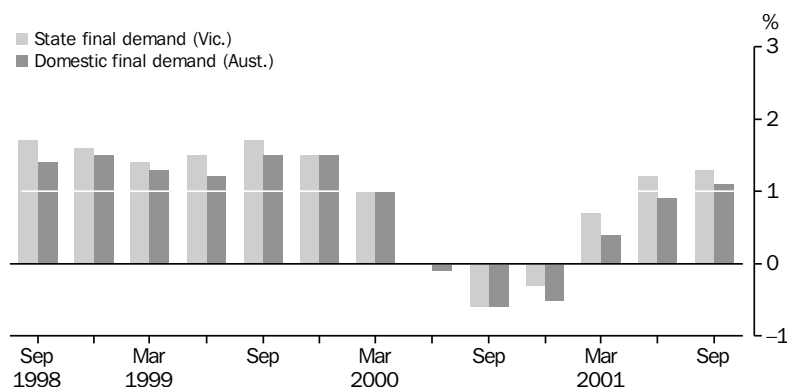
OVERVIEW

STATE FINAL DEMAND

State final demand for Victoria in the September quarter 2001 was \$40,678m using the trend series chain volume measure. This represents an increase of 1.3% from the June quarter, which for the second quarter running is the largest quarterly increase since the December quarter 1999. By comparison, domestic final demand (for Australia) grew by 1.1% from the March to the June quarter.

The largest single component of Victorian State final demand, final consumption expenditure by households, grew by 1.4% in the September quarter to \$24,967m in trend chain volume terms. Private gross fixed capital formation grew by 2.0% in the September quarter, largely driven by 5.7% growth for dwellings and 5.0% growth for ownership transfer costs.

FINAL DEMAND (CHAIN VOLUME MEASURES), Change from previous quarter:
Trend



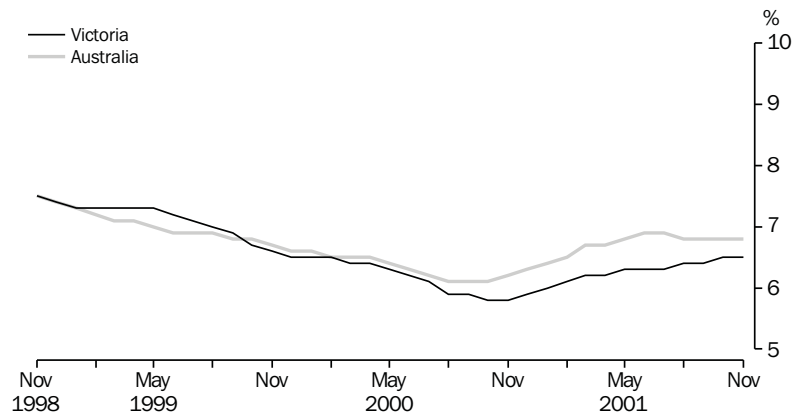
DEMOGRAPHY

Preliminary population estimates indicate that Victoria's population increased 1.3% in the year to 30 June 2001, to a total of 4,829,000 persons. Annual growth in Victoria was slightly higher than for Australia (1.2%). The largest single component of the increase in Victoria was net overseas migration (27,600 persons), followed by a natural increase (births minus deaths) for the year of 26,600 persons. The population increase in the June quarter was 12,900 persons or 0.3%.

LABOUR MARKET

Trend estimates to November 2001 showed that the unemployment rate in Victoria has been relatively steady since August at 6.4–6.5%, following a period of increase since November 2000 (when it was 5.8%). The participation rate, which was 63.8% in November, has also been stable in recent months. Unemployment in Victoria remains lower than the Australian rate of 6.8%.

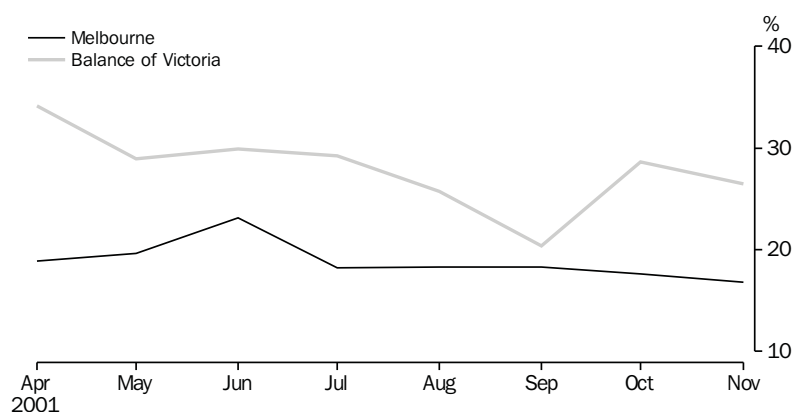
UNEMPLOYMENT RATE: Trend



In original series terms, the number of unemployed persons in Victoria in November 2001 was 147,300. The November 2001 unemployment rate for Melbourne (5.9%) was close to the Victorian value (6.0%). For statistical regions outside Melbourne, estimated unemployment ranged from 5.0% in Barwon-Western District to 7.8% in Central Highlands-Wimmera. The figures appeared to indicate an improvement in unemployment in the Loddon-Mallee (6.1%) and All Gippsland (6.4%) statistical regions, which have for some time recorded rates considerably higher than the Victorian average. However regional unemployment figures should be interpreted with caution, as they are subject to large sampling variability due to the small sample size in each region.

Since April 2001, the percentage of unemployed persons who had been out of work for 52 weeks or more has been consistently greater in the Balance of Victoria (between 20.4% and 34.1%) than it has in Melbourne (16.8% to 23.1%). Over the same period, the percentage of unemployed persons out of work for less than 13 weeks has varied between 43.9% and 50.6% in Melbourne, and between 31.5% and 45.5% in the Balance of Victoria.

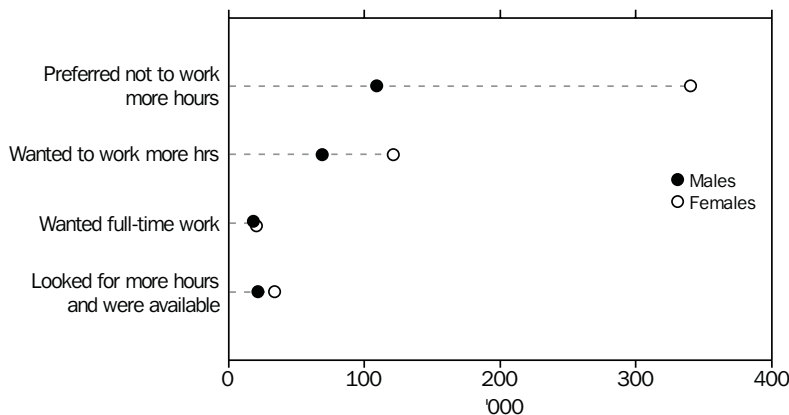
% UNEMPLOYED FOR 52 WEEKS OR MORE



Total employment in Victoria was 2,323,600 in November 2001 in trend terms, 0.3% higher than the August 2001 estimate. Of those employed, 1,690,800 (72.8%) were employed full-time, 1.0% more than in August 2001.

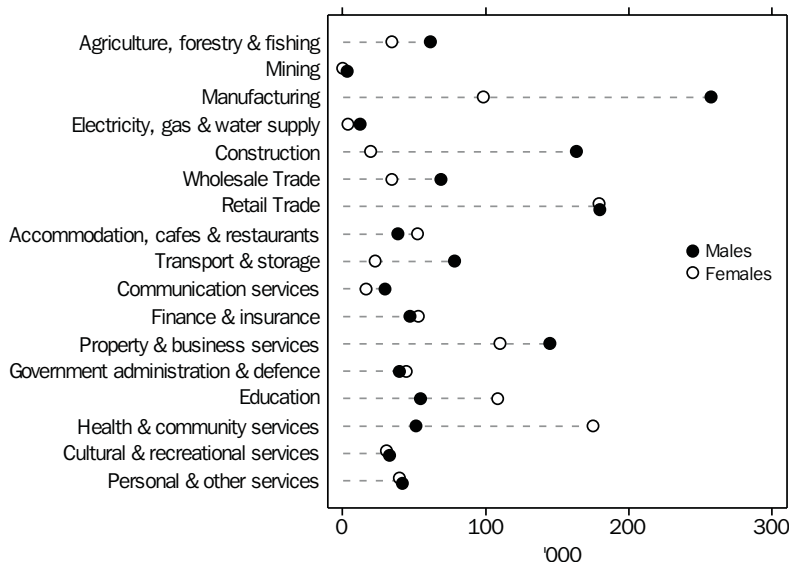
In November 2001 there were an estimated 639,700 part-time workers in Victoria, 461,800 female and 177,900 male. Of all part-time workers, 29.7% (190,200) wanted to work more hours, but only 38,600 (6.0%) wanted to work full-time. Only 8.7% of part-timers (55,800 persons, comprising 34,000 males and 21,000 females) had actively looked for more hours and were available to work more hours.

PART-TIME WORKERS, Victoria—November 2001



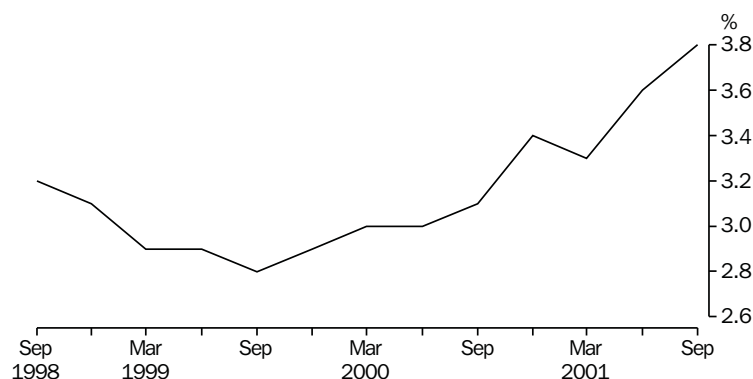
The largest employing industries in Victoria are retail trade (359,100 persons or 15.4% of total employment), manufacturing (355,900, 15.3%) and property and business services (254,900, 11.0%). Among female employees, the largest industries are retail trade (17.5%) and health and community services (17.1%). For males, manufacturing (19.8%), retail trade (13.8%) and construction (12.5%) provide the most employment.

EMPLOYED PERSONS, BY INDUSTRY, Victoria—November 2001



The wage cost index for total hourly rates of pay (excluding bonuses) in Victoria increased by 1.2% in the September quarter 2001, and by 3.8% in the year to September 2001. While the index has historically experienced its greatest increases in the September quarter every year, both quarterly and annual growth for September 2001 are the highest they have been since the commencement of the wage cost index series in September quarter 1997. Victoria (3.8%) recorded the highest annual growth in the index of all mainland States, with increases in other States varying from 3.2% in South Australia to 3.7% in Queensland. For Australia, the annual increase in this index was 3.6%.

WAGE COST INDEX(a), Total hourly rates of pay excluding bonuses—
Change in previous 12 months

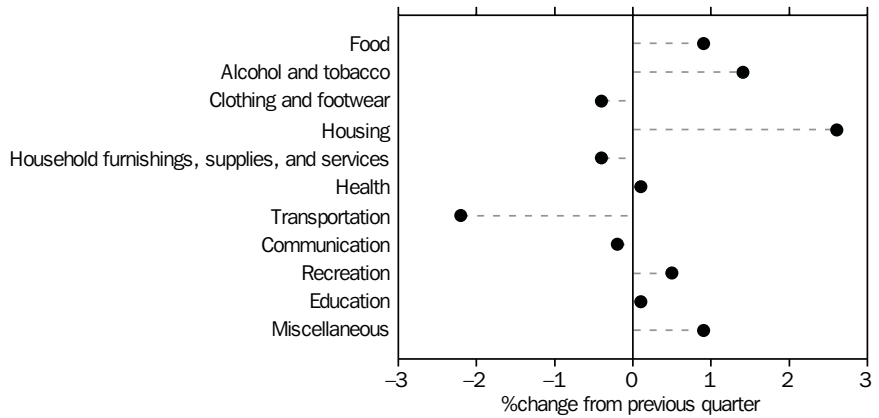


(a) Base: Sep Qtr 1997 = 100.0

PRICE INDEXES

Between June quarter 2001 and September quarter 2001, the all-groups Consumer Price Index (CPI) for Melbourne rose by 0.5%, compared with 0.3% for the weighted average CPI for the eight capital cities. The largest contributors to this quarterly increase were housing (up 2.6%) and alcohol and tobacco (up 1.4%). There were some notable falls during the quarter: transportation (down 2.2%), clothing and footwear (down 0.4%) and household furnishings, supplies and services (down 0.4%). Over the year ending September quarter 2001, the CPI rose 2.5% for Melbourne, which was the same as the increase in the eight capital cities weighted average. The biggest yearly increases for Melbourne occurred in the cost of alcohol and tobacco (up 7.0%), food (up 6.5%) and education (up 4.5%). Clothing saw the biggest annual fall (down 3%).

CONSUMER PRICE INDEX(a), Melbourne, all groups—September qtr 2001

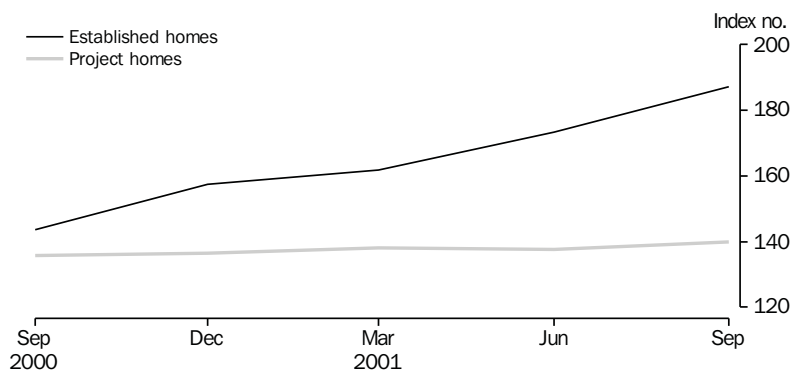


(a) Base of each index: 1989-90 = 100.0.

The prices of established homes in Melbourne continued to exhibit steady rises, with house prices increasing 8.0% during the September quarter 2001, following an increase of 7.1% in the previous quarter. Project home prices increased significantly less than those of established homes. During the September quarter 2001, project home prices increased 1.7% in Melbourne, and actually fell by 0.3% in the June quarter 2001. The difference between established and project homes is also reflected in the weighted average of the eight capital cities, where established home prices rose 5.2% during the September quarter 2001 compared with 0.7% for project homes.

In terms of annual change, established home prices in Melbourne rose 30.4% from September 2000 to September 2001. This compares to a rise of only 3.2% in the prices of project homes for the same period. The annual growth in Melbourne established home prices is more than twice that of the weighted average of the eight capital cities (14.0%). Project home prices nationally rose 1.6% for the same period.

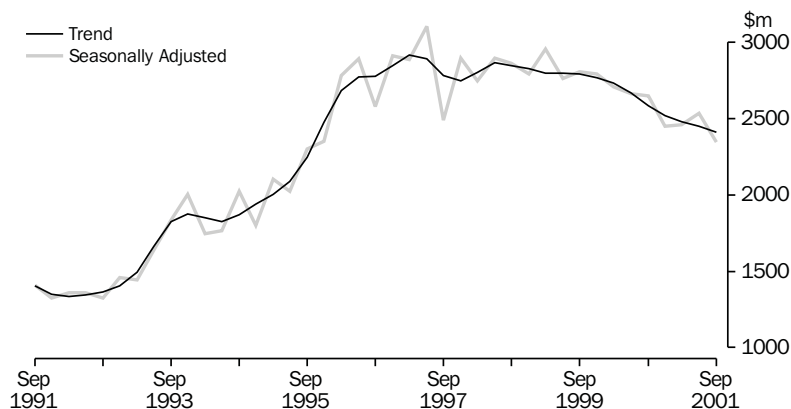
HOUSE PRICE INDEX(a), Melbourne



(a) Base: 1988-89 = 100.0

Trend estimates indicate that private new capital expenditure by mining, manufacturing and other selected industries has continued the decline which began in the June quarter 1998, with expenditure on all assets declining by 1.5% to \$2,413m in the September quarter 2001. Capital expenditure in the September quarter 2001 was down by 6.7% compared with the September quarter 2000, which compares with an Australia-wide drop of 4.9%.

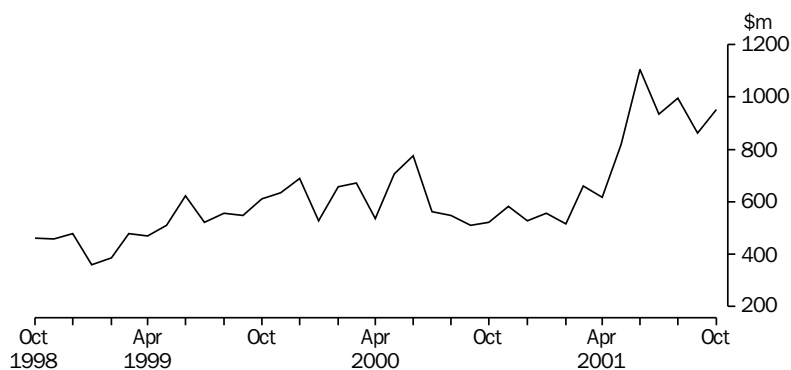
PRIVATE NEW CAPITAL EXPENDITURE, Victoria—Current Prices



Total bank deposits increased by 16.2%, from \$93,183m to \$108,304m, in the 12 months to October 2001. Growth in bank deposits for Australia in this 12 month period was 11.2%. During the three months to October 2001, Victorian bank deposits grew by 6.3%. In this three month period, current deposits bearing interest grew by 7.0% to \$25,663m, while term deposits grew more slowly (by 3.7%) to \$56,533m.

Total commercial finance commitments were \$4,046.9m in October 2001, representing an increase of 24.7% since September and 29.6% over the preceding 12 months. For Australia, the increase in total commercial finance commitments over the 12 months to October 2001 was 16.0%. Both revolving credit facilities (up 32.6%) and fixed loan facilities (with growth of 19.6%) contributed to the Victorian increase during October 2001. Fixed loan facilities for purchase of real property maintained high levels despite falling 13.9% from a peak in June, and totalled \$952.4m in October 2001. However fixed loans for construction showed a more significant decline since the middle of 2001, with the October figure of \$109.7m 43.2% below the July peak.

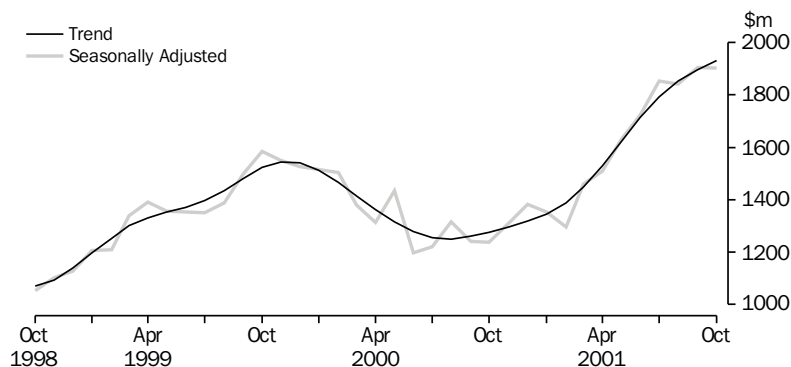
COMMERCIAL FINANCE(a), FOR PURCHASE OF REAL PROPERTY, Victoria



(a) Fixed loan facilities

Trend estimates of the value of secured housing finance commitments in Victoria have been increasing steadily since September 2000. Over the year to October 2001, they rose 51.5% to \$1,932m. However the monthly rate of increase has declined to 1.8% since its May 2001 peak of 6.1%.

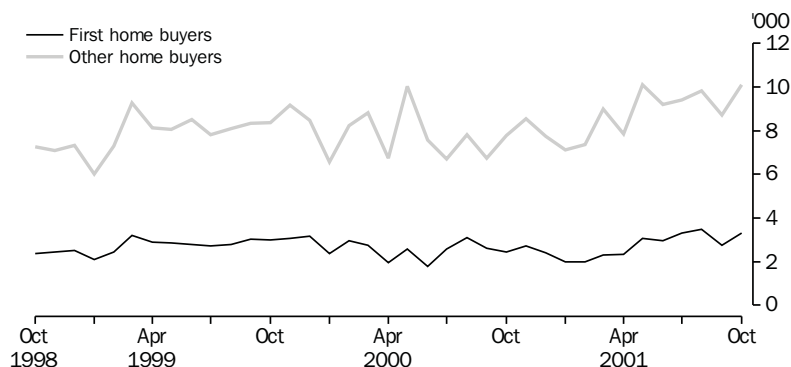
HOUSING FINANCE COMMITMENTS(a) TO INDIVIDUALS, TOTAL VALUE, Victoria



(a) Secured finance for owner occupation.

Secured housing finance commitments for owner occupation of dwelling units for first home buyers reached a peak in August 2001, in terms of the number of dwellings financed (3,466), the value of commitments (\$477.6m), and the number as a proportion of all dwellings financed (26.1%). The number of dwellings financed for first home buyers dipped to 2,740 in September 2001, before climbing to 3,301 in October. In October 2001, first home buyers accounted for 24.6% of all dwellings financed. This was a higher proportion than that experienced in the early part of 2001, but similar to the proportions for the last few financial years overall. The size of the average borrowing has been increasing since April 2001, reaching \$146,400 in October for first home buyers, and \$153,000 for other home buyers.

NUMBER OF DWELLINGS FINANCED TO HOME BUYERS(a), Victoria

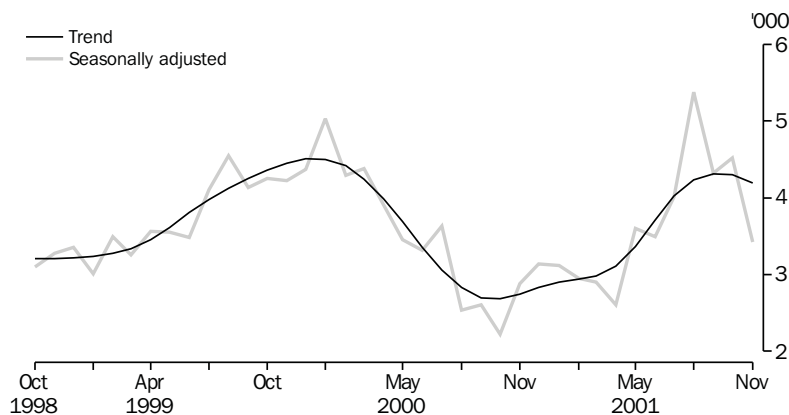


(a) For owner occupation.

CONSTRUCTION

Trend estimates for building approvals appear to indicate an end to the recent period of growth, which commenced in late 2000. Approvals in November 2001 were valued at \$1,055.5m, a 0.1% drop from the previous month. Numbers of dwelling unit approvals peaked in September 2001 at 4,309, and dropped 2.8% to 4,190 in November. Despite the recent drop, the November 2001 figure represented an increase of 52.8% over November 2000.

DWELLING UNITS APPROVED, Victoria

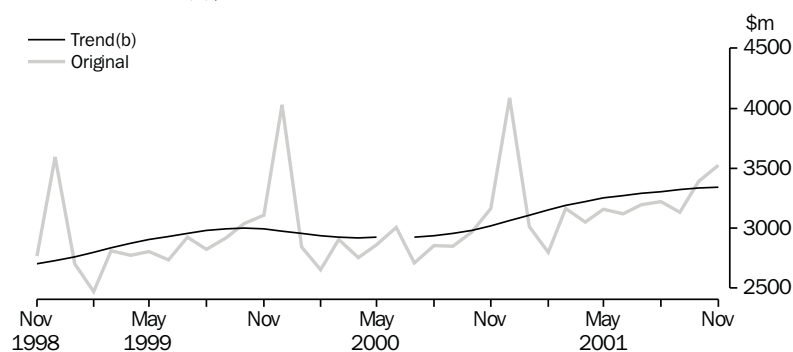


Chain volume measures of building to the June quarter 2001 were consistent with recovery from a slump in the second half of 2000. Work commenced in the June quarter 2001 was valued at \$2,790.4m (original series), 21.1% higher than in the previous quarter but 6.9% lower than in the June quarter 2000. The quarterly increase was particularly noticeable in private sector non-residential building (48.1%) and alterations and additions to residential buildings (36.9%). Seasonally adjusted chain volume measures of work done showed a 1.3% increase in the June quarter 2001.

RETAIL TURNOVER

During November 2001, Victorian retail turnover was \$3,340.9m in trend terms, 10.5% more than in November 2000; whereas Australian retail turnover grew 8.3%. Victorian retail turnover has increased in trend terms each month since the break in the series (due to the New Tax System) at July 2000. However growth each month has been slowing since February 2001, and was 0.3% in November 2001. Retailers of household goods have been experiencing substantially larger growth in turnover than other retailers, with a 1.2% increase in the month to November, and 27.7% growth in the preceding 12 months.

RETAIL TURNOVER(a), Victoria



(a) Excludes motor vehicles, parts, petrol, etc.

(b) Break in the trend series between June and July 2000 is because of the New Tax System.

TOURIST ACCOMMODATION

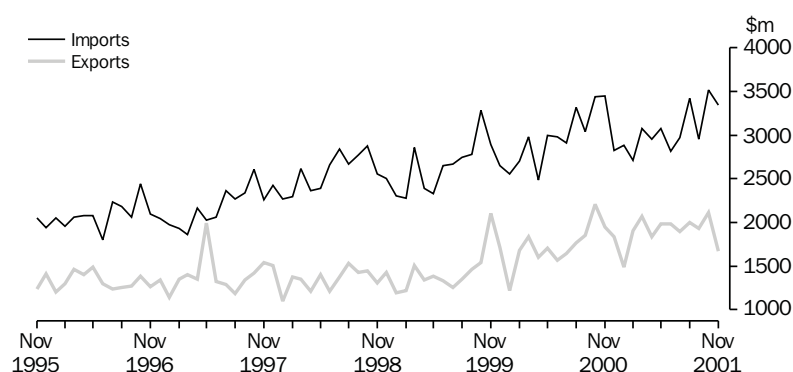
Takings from tourist accommodation in Victoria in the September quarter 2001 were \$214.1m, which accounted for 17.5% of total takings for Australia. This represented a 3.2% increase from the September quarter 2000. Room nights occupied for the quarter increased by 2.5%, and guest nights occupied by 5.0%, relative to the previous year's September quarter.

The Melbourne Tourism Region accounted for 76.9% of the State's total tourist accommodation takings. Outside Melbourne, with the peak of the snow season, the High Country Tourism Region had the largest takings at \$12.5m, or 5.8% of the State total.

INTERNATIONAL MERCHANDISE TRADE

In November 2001, Victorian exports were valued at \$1,668m, down 20.9% from October 2001 and 14.4% from November 2000. In comparison, Australian exports in November 2001 were 2.6% below their November 2000 value. The value of Victorian imports in November 2001 was \$3,339m, a decrease of 5.1% from October 2001 and 3.0% from November 2000.

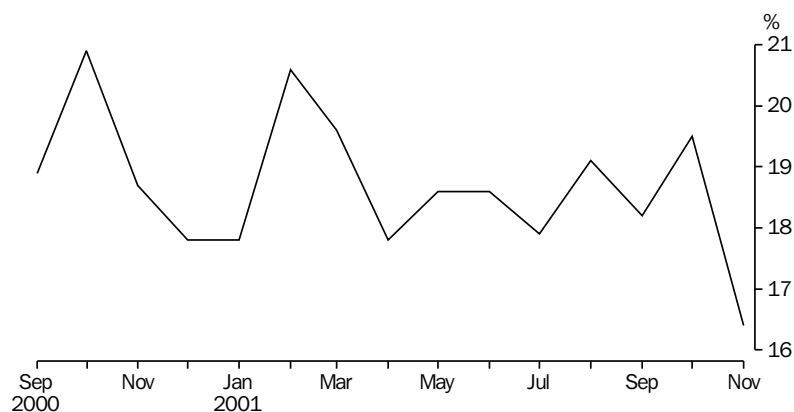
INTERNATIONAL MERCHANDISE TRADE(a), Victoria



(a) Imports at Customs Value.

Victorian exports contributed 16.4% to the Australian total in November 2001. This was the lowest proportion for some time. Victorian imports in November 2001 were 31.8% of the total Australian value, a similar proportion to that throughout recent months.

VALUE OF EXPORTS, Victoria as a proportion of Australia



Looking at exports by commodity, for the five months to November 2001, food and live animals contributed most to Victoria's earnings (\$2,781m or 28.9%). Machinery and transport equipment (\$1,783m, 18.6%), and manufactured goods (\$1,197m, 12.5%) were also strong contributors.

From July to November 2001, countries receiving the greatest value of Victorian exports were the USA (\$984m, 10.2%), Japan (\$893m, 9.3%) and New Zealand (\$888m, 9.2%). Also important were Saudi Arabia (\$637m, 6.6%), China (\$622m, 6.5%) and Singapore (\$520m, 5.4%). The countries with the largest value of imports to Victoria were the USA (\$3,018m, 18.7%), Japan (\$2,218m, 13.7%), China (\$1,978m, 12.2%) and Germany (\$1,233m, 7.6%).

Highest growth rate countries for Victorian exports from 1999–2000 to 2000–01 were Mexico (112.2% increase), Saudi Arabia (71.3%), Belgium-Luxembourg (52.7%), and Brazil (52.2%); while exports shrank to New Zealand (18.3% decrease) and South Africa (10.9%). Highest growth rate countries for imports to Victoria (1999–2000 to 2000–01) included Saudi Arabia (42.1% increase), Pakistan (31.8%), China (28.5%) and South Africa (25.3%); while imports decreased from Papua New Guinea (67.2% decrease) and Fiji (26.8%).

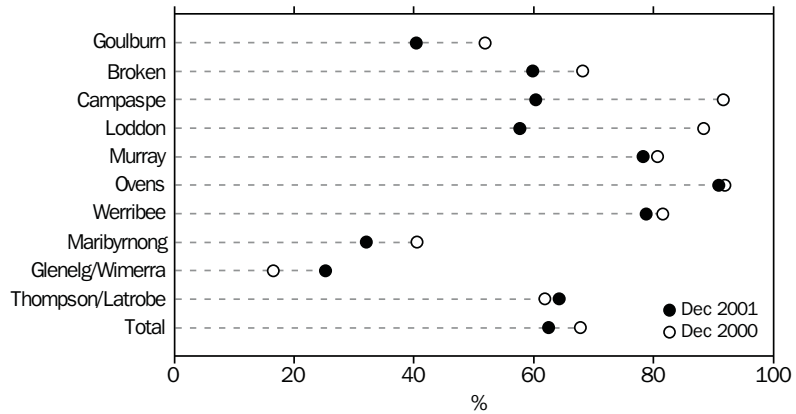
NATURAL RESOURCES

The Air Quality Index compiled by the Environment Protection Authority, Victoria (EPA) measures the concentration of various pollutants relative to the levels at which they may cause harm. The Index is available for four regions in the Port Philip Region (East, West, City and Geelong) and the Latrobe Valley.

Quarterly Air Quality Index data from March 1999 to March 2001 indicate that air quality is generally higher in the December and March quarters than in the June and September quarters. This variation has been particularly marked in the East and Latrobe Valley regions, which had noticeably lower air quality in the June and September quarters of 1999 and 2000. The Geelong region had the highest air quality overall, and had the highest proportion of days with a 'very good' rating in the March quarter 2001 (52%). The Latrobe Valley had the lowest proportion of days in the March quarter 2001 with a 'very good' rating (35%).

At the end of December 2001, Victorian water storages were at 62.5% of their full capacity, 7.8% less than a year earlier. Storage levels were below 50% of capacity in three river basins: Glenelg/Wimmera (25.2%), Maribyrnong (32.1%) and Goulburn (40.4%). However the Glenelg/Wimmera storage level represented an increase of 52.7% above the level at the end of December 2000. In only three river basins (Murray (78.3%), Werribee (78.7%) and Ovens (90.9%)) was storage above 70% of capacity at the end of December 2001. In the calendar year 2001, storage in the Campaspe and Loddon river basins declined by over a third.

WATER STORAGE, Storage volume as proportion of capacity—River basins



LIST OF TABLES

Page

SUMMARY	1	Summary of statistical indicators: State comparison	16	
STATE FINAL DEMAND	2	State final demand: original	17	
	3	State final demand, chain volume measures: seasonally adjusted and trend	18	
POPULATION	4	Estimated resident population and components of population change	19	
	5	Registration of births, deaths, marriages and divorces	19	
LABOUR MARKET	6	Civilian labour force: all series	20	
	7	Civilian labour force, by region	21	
	8	Employed persons, by industry, November 2001	23	
	9	Part-time workers, by sex	23	
	10	Duration of unemployment, by sex and major statistical region	24	
	11	Job vacancies	25	
	12	Industrial disputes causing stoppage of work	25	
	13	Average weekly earnings of employees, by sex: all series	26	
	14	Wage costs indexes	27	
	PRICE INDEXES	15	Consumer price index, by group: Melbourne	27
		16	House price indexes: Melbourne and weighted average of eight capital cities	28
		17	Price indexes of materials used in building: Melbourne	28
		18	Price indexes of materials used in manufacturing industries: Australia	29
		19	Price indexes of articles produced by manufacturing industry: Australia	30
20		Export price indexes, by commodity: Australia	30	
BUSINESS EXPECTATIONS	21	Business expectations, short-term outlook	31	
	22	Business expectations, medium-term outlook	31	

FINANCE	23	Private new capital expenditure, by type of asset and industry: original	32
	24	Private new capital expenditure, by type of asset: seasonally adjusted and trend	32
	25	Bank deposits: all banks	33
	26	Commercial finance commitments	33
	27	Lease finance commitments, by purpose	34
	28	Personal finance commitments	35
	29	Secured housing finance commitments, dwelling units: all series	36
	30	Secured housing finance commitments, dwelling units, by type of borrower	37
CONSTRUCTION	31	Building approvals: all series	38
	32	Building approvals, by major statistical region	40
	33	Building approvals, by local government area	42
	34	Value of building work, chain volume measures	44
	35	Value of building activity other than houses, by local government area, June quarter 2001	45
MOTOR VEHICLE REGISTRATIONS	36	New motor vehicle registrations: all series	46
	37	New motor vehicle registrations, by Local Government Area	47
RETAIL	38	Retail turnover by industry: all series	49
	39	Retail turnover, chain volume measures: all series	50
TOURISM	40	Tourist accommodation	51
	41	Tourist accommodation, by tourism region, September quarter 2001	51
PRODUCTION	42	Livestock slaughterings and meat production: all series	52
	43	Other production	53
TRADE	44	International merchandise trade, by commodity	54
	45	Balance of international merchandise trade	54
	46	International merchandise trade, by major trading partners	55
NATURAL RESOURCES	47	Air quality	56
	48	Storage volumes in Victorian water storages, by river basin	57

1

SUMMARY OF STATISTICAL INDICATORS: STATE COMPARISON

	Period	Change from the same period in the previous year						
		Vic. as a proportion of Australia	Vic.	NSW	Qld	SA	WA	Aust.
		%	%	%	%	%	%	%
State final demand (trend, chain volume measure)	Jun qtr 01	24.9	1.5	-2.5	2.9	1.1	2.7	0.3
Population								
Total population	Jun qtr 01	24.9	1.3	1.1	1.7	0.3	1.4	1.2
Natural increase(a)	Jun qtr 01	..	0.6	0.6	0.7	0.4	0.7	0.6
Net overseas migration(a)	Jun qtr 01	..	0.6	0.7	0.5	0.2	0.8	0.6
Net interstate migration(a)	Jun qtr 01	..	0.2	-0.3	0.6	-0.3	-0.1	..
Labour								
Number employed (trend)	Nov 01	25.3	0.8	0.5	1.4	0.4	0.8	0.8
Unemployment rate (trend)(b)	Nov 01	..	0.7	0.9	0.4	-0.1	0.6	0.6
Participation rate (trend)(b)	Nov 01	..	—	0.3	0.1	-0.1	-0.1	0.2
Working days lost for 12 months ended	Sep 01	30.4	-40.5	-47.8	12.7	-41.7	-37.8	-38.6
Job vacancies	Nov 01	30.2	-28.3	-33.5	7.9	16.3	-27.7	-23.1
Average weekly full-time adult total earnings (trend)	Aug 01	..	4.8	6.0	4.9	4.9	3.2	4.9
Wage cost index	Sep qtr 01	..	3.8	3.4	3.7	3.2	3.6	3.6
Prices								
Consumer price index	Sep qtr 01	..	2.5	2.9	2.2	2.3	2.3	2.5
Price index of materials used in house building	Sep qtr 01	..	0.9	0.4	-0.8	-1.1	0.5	0.2
Price index of materials used in building other than house building	Sep qtr 01	..	2.5	1.5	1.1	1.0	2.3	1.7
Established house price index	Sep qtr 01	..	30.4	10.4	5.5	10.3	6.8	14.0
Finance								
Capital expenditure (trend)	Sep qtr 01	25.1	-6.7	-18.7	-10.9	-21.2	26.5	-4.9
Bank deposits	Oct 01	23.7	16.2	10.2	11.5	9.3	5.0	11.2
Commercial finance	Oct 01	26.1	29.6	4.0	26.0	78.1	14.8	16.0
Lease finance	Oct 01	25.4	31.7	21.4	38.4	58.7	21.0	28.3
Personal finance	Oct 01	26.1	25.7	20.5	16.4	23.8	20.0	20.9
Secured housing finance (trend)	Oct 01	23.9	25.7	21.5	37.7	10.1	11.1	21.9
Building								
Dwelling units approved (trend)	Aug 01	30.1	53.2	23.7	53.8	55.8	43.3	46.5
Value of residential building approved (trend)	Aug 01	34.4	61.7	42.8	62.5	51.1	43.4	51.2
Total value of building approved (trend)	Aug 01	33.3	41.8	26.6	33.3	50.8	24.9	33.2
Value of building commenced (chain volume measure)	Jun qtr 01	35.0	-6.9	-24.5	-22.7	-20.7	-17.6	-18.1
Value of building work done (seas. adj., chain volume measure)	Jun qtr 01	30.9	-19.9	-38.8	-30.2	-29.9	-32.3	-30.3
Consumer spending								
New motor vehicle registrations (trend)	Oct 01	27.1	-6.0	-4.8	-2.6	-1.5	-8.5	-5.0
Retail turnover (trend)	Aug 01	24.3	12.9	6.4	7.5	11.6	4.8	8.5
Takings from tourist accommodation	Sep qtr 01	17.5	3.2	-24.3	7.2	0.7	-1.3	-7.8
International merchandise trade								
Imports	Nov 01	31.8	-3.0	-8.1	4.7	-26.3	11.2	-4.7
Exports	Nov 01	16.4	-14.4	1.4	2.7	17.1	-2.7	-2.6

(a) Percentage change figures for components of population increase indicate the contribution of each component to the total population increase.

(b) Percentage change columns indicate the difference between the percentage rate for the reference period, and the percentage rate for the same period in the previous year.

2

STATE FINAL DEMAND: ORIGINAL(a)

	Dec qtr 1999	Mar qtr 2000	Jun qtr 2000	Sep qtr 2000	Dec qtr 2000	Mar qtr 2001	Jun qtr 2001	Sep qtr 2001
CURRENT PRICES (\$m)								
Final consumption expenditure								
General government	6 507	6 696	7 103	7 153	7 144	6 917	7 270	7 114
Households	24 973	22 638	23 809	24 563	26 152	24 261	25 846	26 417
Gross fixed capital formation								
Private								
Dwellings	2 261	2 346	2 944	2 558	2 408	2 242	2 521	2 709
Other buildings and structures	1 354	1 146	1 304	1 182	1 218	1 184	1 328	1 220
Machinery and equipment	3 024	2 467	2 824	3 040	2 723	2 454	2 689	2 690
Livestock	120	120	120	163	163	163	163	152
Intangible fixed assets	700	683	699	724	784	764	773	760
Ownership transfer costs	497	578	549	532	504	521	572	697
<i>Total private</i>	7 956	7 338	8 440	8 200	7 799	7 327	8 045	8 228
Public	1 354	1 318	1 336	1 038	1 224	1 101	1 526	1 108
State final demand	40 791	37 991	40 688	40 954	42 319	39 606	42 688	42 866
International trade—exports of goods	5 724	4 980	5 271	5 557	6 341	5 731	6 101	6 386
International trade—imports of goods	8 827	8 238	8 465	9 268	9 704	8 667	8 846	9 351
Compensation of employees	19 764	19 586	20 016	20 286	21 593	20 936	20 854	21 055
CHAIN VOLUME MEASURES(b) (\$m)								
Final consumption expenditure								
General government	6 568	6 667	6 871	6 814	6 828	6 670	6 849	6 772
Households	25 103	22 542	23 601	23 695	25 151	23 128	24 468	24 917
Gross fixed capital formation								
Private								
Dwellings	2 301	2 327	2 849	2 246	2 112	1 948	2 182	2 336
Other buildings and structures	1 360	1 140	1 281	1 154	1 172	1 126	1 251	1 146
Machinery and equipment	3 021	2 492	2 840	3 162	2 785	2 490	2 710	2 762
Livestock	120	120	120	118	118	118	118	115
Intangible fixed assets	694	688	715	751	825	815	832	832
Ownership transfer costs	474	604	560	541	498	476	519	591
<i>Total private</i>	7 986	7 362	8 344	7 971	7 509	6 973	7 613	7 781
Public	1 351	1 331	1 338	1 034	1 209	1 078	1 488	1 088
State final demand	41 017	37 893	40 160	39 514	40 698	37 849	40 418	40 558
International trade—exports of goods	5 811	4 987	5 005	5 147	5 537	4 985	5 148	5 429
International trade—imports of goods	8 937	8 256	8 014	8 749	8 618	7 802	7 720	8 301

(a) Figures have been revised since last issue.

(b) Reference year for chain volume measures is 1999–2000.

Source: Australian National Accounts: National Income, Expenditure and Product (Cat. no. 5206.0); ABS data available on request, Australian National Accounts.

3

STATE FINAL DEMAND, CHAIN VOLUME MEASURES(a): SEASONALLY ADJUSTED AND TREND

	Dec qtr 1999	Mar qtr 2000	Jun qtr 2000	Sep qtr 2000	Dec qtr 2000	Mar qtr 2001	Jun qtr 2001	Sep qtr 2001
SEASONALLY ADJUSTED (\$m)								
Final consumption expenditure								
General government	6 394	6 824	7 162	7 100	7 016	7 042	7 333	7 067
Households	23 624	23 629	23 985	24 480	24 839	25 540	26 027	26 430
Gross fixed capital formation								
Private								
Dwellings	2 166	2 510	2 882	2 554	2 310	2 397	2 458	2 723
Other buildings and structures	1 289	1 223	1 291	1 175	1 160	1 272	1 307	1 212
Machinery and equipment	2 858	2 857	2 707	2 932	2 577	2 851	2 574	2 581
Livestock	120	120	120	163	163	163	163	152
Intangible fixed assets	679	694	704	730	761	776	778	766
Ownership transfer costs	519	538	566	534	526	485	589	699
Total private	7 632	7 941	8 270	8 088	7 497	7 943	7 869	8 134
Public	1 414	1 374	1 118	1 154	1 279	1 125	1 310	1 229
State final demand	39 064	39 769	40 534	40 822	40 631	41 650	42 539	42 860
International trade—exports of goods	5 302	5 104	5 363	5 782	5 860	5 880	6 222	6 639
International trade—imports of goods	8 451	8 590	8 813	8 951	9 280	9 042	9 212	9 033
TREND ESTIMATES(b) (\$m)								
Final consumption expenditure								
General government	6 541	6 723	6 845	6 846	6 782	6 758	6 789	6 837
Households	23 688	23 738	23 695	23 734	23 929	24 258	24 631	24 967
Gross fixed capital formation								
Private								
Dwellings	2 313	2 512	2 537	2 354	2 113	2 069	2 167	2 290
Other buildings and structures	1 265	1 259	1 212	1 170	1 161	1 179	1 193	1 186
Machinery and equipment	2 808	2 851	2 817	2 882	2 808	2 735	2 654	2 672
Livestock	120	120	119	119	118	118	117	116
Intangible fixed assets	673	699	724	759	797	822	837	845
Ownership transfer costs	516	559	574	540	500	501	524	550
Total private	7 656	8 079	7 983	7 742	7 487	7 477	7 477	7 624
Public	1 412	1 301	1 217	1 164	1 174	1 205	1 217	1 226
State final demand	39 349	39 749	39 765	39 514	39 383	39 658	40 150	40 678
International trade—exports of goods	5 102	5 218	5 213	5 173	5 171	5 187	5 287	5 429
International trade—imports of goods	8 480	8 527	8 470	8 380	8 282	8 152	8 044	7 976
TREND ESTIMATES (% change from previous quarter)								
Final consumption expenditure								
General government	2.0	2.8	1.8	0.0	-0.9	-0.4	0.5	0.7
Households	0.9	0.2	-0.2	0.2	0.8	1.4	1.5	1.4
Gross fixed capital formation								
Private								
Dwellings	8.9	8.6	1.0	-7.2	-10.2	-2.1	4.7	5.7
Other buildings and structures	-0.1	-0.5	-3.7	-3.5	-0.8	1.6	1.2	-0.6
Machinery and equipment	1.7	1.5	-1.2	2.3	-2.6	-2.6	-3.0	0.7
Livestock	1.7	0.0	-0.8	0.0	-0.8	0.0	-0.8	-0.9
Intangible fixed assets	5.3	3.9	3.6	4.8	5.0	3.1	1.8	1.0
Ownership transfer costs	7.7	8.3	2.7	-5.9	-7.4	0.2	4.6	5.0
Total private	3.7	5.5	-1.2	-3.0	-3.3	-0.1	0.0	2.0
Public	-2.5	-7.9	-6.5	-4.4	0.9	2.6	1.0	0.7
State final demand	1.5	1.0	0.0	-0.6	-0.3	0.7	1.2	1.3
International trade—exports of goods	5.0	2.3	-0.1	-0.8	0.0	0.3	1.9	2.7
International trade—imports of goods	2.5	0.6	-0.7	-1.1	-1.2	-1.6	-1.3	-0.8

(a) Reference year for chain volume measures is 1999–2000.

(b) Trend estimates for aggregates are derived directly, rather than as the sum of components. As a result, the sum of the trend estimates of individual components of a particular aggregate will not sum to the overall trend estimate of the aggregate.

Source: Australian National Accounts: National Income, Expenditure and Product (Cat. no. 5206.0); ABS data available on request, Australian National Accounts.

4

ESTIMATED RESIDENT POPULATION AND COMPONENTS OF POPULATION CHANGE

Period	Population at end of period			Components of population change				% change from previous 12 months	
	Males	Females	Persons	Natural increase	Net overseas migration	Net interstate migration	Total increase(a)	Victoria	Australia
	'000	'000	'000	'000	'000	'000	'000		
1995-96	2 252.6	2 307.5	4 560.2	28.5	25.7	-12.8	42.8	1.0	1.3
1996-97	2 275.2	2 330.0	4 605.2	28.7	21.1	-4.7	45.1	1.0	1.2
1997-98	2 301.0	2 353.9	4 654.9	27.7	20.8	1.2	49.7	1.1	1.1
1998-99	2 328.1	2 379.5	4 707.6	27.1	21.6	4.0	52.7	1.1	1.1
1999-2000	2 359.0	2 407.8	4 766.8	27.7	24.8	6.7	59.2	1.3	1.2
2000-01	2 392.4	2 436.6	4 829.0	26.6	27.6	7.9	62.2	1.3	1.2
1999									
September	2 336.3	2 386.7	4 723.0	7.0	p 7.4	1.0	15.4	1.2	1.1
December	2 343.7	2 394.5	4 738.2	7.0	p 5.9	2.3	15.2	1.2	1.1
2000									
March	2 352.8	2 402.4	4 755.2	7.3	p 7.9	1.9	17.0	1.2	1.2
June	2 359.0	2 407.8	4 766.8	6.4	p 3.7	1.5	11.6	1.3	1.2
September p	2 368.2	2 415.6	4 783.8	6.2	(b) 9.0	1.8	17.0	1.3	1.2
December p	2 375.6	2 422.7	4 798.3	6.2	(b) 6.4	1.9	14.5	1.3	1.2
2001									
March p	2 385.5	2 430.6	4 816.1	6.7	(c) 8.4	2.7	17.8	1.3	1.2
June p	2 392.4	2 436.6	4 829.0	7.5	(c) 3.9	1.5	12.9	1.3	1.2

(a) Differences between total growth and the sum of natural increase and net migration arise from retrospective adjustments (which are made after each Census) to compensate for any intercensal discrepancy.

(b) Special arrangements were put in place to obtain overseas migration data for September and December quarters 2000. Further information is available in *Australian Demographic Statistics, December quarter 2000* (Cat. no. 3101.0) and Demography Working Paper 2001/1 — Estimating July to December 2000 Net Overseas Migration, available on the ABS website <www.abs.gov.au>. From the navigation bar select Themes; Demography; ABS Demography Working Papers.

(c) The resident population as at 31 March 2001 and at 30 June 2001 are projections, because the ABS has yet to receive the data necessary to estimate net overseas migration.

Source: *Australian Demographic Statistics* (Cat. no. 3101.0); ABS data available on request, *Australian Demographic Statistics*.

5

REGISTRATION OF BIRTHS, DEATHS, MARRIAGES AND DIVORCES

Period	Births	Infant deaths(a)	Total deaths	Marriages	Divorces
REGISTRATIONS (no.)					
1998-99	59 374	318	32 298	26 351	12 579
1999-2000	59 733	304	31 992	27 558	12 818
2000-01	58 615	257	32 013	25 703	12 495
1999					
June qtr	14 590	88	8 205	5 922	3 105
September qtr	15 655	79	8 636	4 211	3 461
December qtr	14 909	75	7 912	8 462	3 438
2000					
March qtr	14 626	73	7 350	8 683	2 733
June qtr	14 543	77	8 094	6 202	3 186
September qtr	p 14 633	p 63	p 8 403	3 943	3 088
December qtr	p 15 520	p 68	p 9 356	8 024	3 394
2001					
March qtr p	13 609	51	6 870	8 049	2 590
June qtr p	14 853	75	7 384	5 687	3 423
RATE PER 1,000 MEAN ESTIMATED RESIDENT POPULATION					
1998-99	12.68	5.36	6.90	5.63	2.69
1999-2000	12.61	5.09	6.75	5.82	2.71
2000-01	12.21	4.38	6.67	5.36	2.60

(a) Rate for infant deaths is per 1,000 live births, and not per 1,000 mean population. Infant deaths are understated due to incomplete identification of age at death data. Rates will be revised when calendar year numbers are finalised.

Source: *Australian Demographic Statistics* (Cat. no. 3101.0).

6

CIVILIAN LABOUR FORCE(a): ALL SERIES

Month	Employed		Unemployed '000	Labour force '000	Unemployment rate		Participation rate	
	Full-time '000	Total '000			Victoria %	Australia %	Victoria %	Australia %
ORIGINAL								
2000								
November	1 691.6	2 298.4	133.6	2 432.1	5.5	6.0	63.4	63.2
December	1 728.9	2 332.9	143.7	2 476.7	5.8	6.3	64.4	64.4
2001								
January	1 690.7	2 277.1	148.9	2 426.0	6.1	6.7	63.0	62.8
February	1 707.1	2 315.6	166.1	2 481.7	6.7	7.4	64.4	63.8
March	1 682.6	2 305.7	161.7	2 467.5	6.6	6.9	63.9	63.6
April	1 685.6	2 310.7	155.9	2 466.6	6.3	6.8	63.8	63.9
May	1 677.8	2 313.0	157.4	2 470.4	6.4	6.9	63.9	63.7
June	1 659.4	2 322.1	146.4	2 468.5	5.9	6.7	63.7	63.7
July	1 665.5	2 320.9	147.5	2 468.4	6.0	6.3	63.7	63.6
August	1 648.5	2 303.1	152.0	2 455.1	6.2	6.6	63.2	63.3
September	1 698.0	2 341.0	158.3	2 499.3	6.3	6.8	64.3	64.2
October	1 684.0	2 323.8	164.7	2 488.6	6.6	6.7	63.9	63.7
November	1 685.0	2 324.7	147.3	2 472.0	6.0	6.4	63.4	63.4
SEASONALLY ADJUSTED								
2000								
November	1 705.1	2 301.2	142.3	2 443.6	5.8	6.3	63.7	63.4
December	1 698.6	2 300.6	143.7	2 444.3	5.9	6.3	63.6	63.5
2001								
January	1 694.7	2 317.4	144.7	2 462.0	5.9	6.3	64.0	63.6
February	1 689.0	2 324.5	149.9	2 474.4	6.1	6.6	64.2	63.6
March	1 688.8	2 310.0	151.8	2 461.9	6.2	6.5	63.8	63.5
April	1 694.6	2 310.5	155.7	2 466.2	6.3	6.8	63.8	63.9
May	1 684.1	2 316.1	158.2	2 474.3	6.4	6.9	64.0	63.9
June	1 669.9	2 316.3	152.9	2 469.3	6.2	6.9	63.8	63.8
July	1 649.2	2 305.9	157.0	2 462.9	6.4	6.9	63.5	63.6
August	1 669.6	2 323.0	156.3	2 479.3	6.3	6.8	63.9	64.0
September	1 693.3	2 320.2	151.1	2 471.2	6.1	6.7	63.6	63.5
October	1 682.5	2 318.3	174.3	2 492.7	7.0	7.1	64.0	63.8
November	1 699.1	2 328.1	157.2	2 485.3	6.3	6.7	63.8	63.5
TREND ESTIMATES								
2000								
November	1 696.0	2 304.8	143.1	2 447.9	5.8	6.2	63.8	63.5
December	1 697.9	2 308.3	144.5	2 452.8	5.9	6.3	63.8	63.5
2001								
January	1 697.8	2 311.8	146.6	2 458.4	6.0	6.4	63.9	63.5
February	1 695.3	2 314.2	149.1	2 463.4	6.1	6.5	63.9	63.6
March	r 1 690.1	r 2 315.0	r 151.9	r 2 466.9	6.2	r 6.7	63.9	63.7
April	r 1 683.6	r 2 314.7	153.9	2 468.5	6.2	6.7	63.9	63.7
May	r 1 677.2	r 2 314.0	r 155.0	r 2 469.0	6.3	6.8	63.8	63.8
June	r 1 672.7	r 2 313.8	r 155.7	r 2 469.5	6.3	6.9	63.8	63.8
July	r 1 671.4	r 2 315.1	r 156.4	r 2 471.5	6.3	6.9	63.7	63.8
August	r 1 673.7	r 2 317.3	r 157.6	r 2 474.8	r 6.4	r 6.8	63.7	r 63.8
September	1 678.6	2 319.6	159.0	2 478.6	6.4	6.8	63.8	63.7
October	1 684.4	2 321.8	160.5	2 482.3	6.5	6.8	63.8	63.7
November	1 690.8	2 323.6	161.8	2 485.4	6.5	6.8	63.8	63.7

(a) Civilian population aged 15 years and over. From April 2001 the Labour Force Survey was conducted using a redesigned questionnaire containing additional data items and some minor definitional changes. Although the impact on core labour force series has been minor, revisions have been made to estimates previously published to ensure continuity. The revised series were released on 3 May 2001. Information Paper: Implementing the Redesigned Labour Force Survey Questionnaire (Cat. no. 6295.0) contains further information about the questionnaire changes and the revised series. For details on the content of the redesigned questionnaire, see Information Paper: Questionnaires Used in the Labour Force Survey (Cat. no. 6232.0).

Source: Labour Force, Australia (Cat. no. 6202.0); Labour Force, Victoria (Cat. no. 6202.2).

7

CIVILIAN LABOUR FORCE(a) BY REGION

Month	Employed			Unemployed '000	Labour force '000	Unemployment rate %	Participation rate %
	Full-time '000	Part-time '000	Total '000				
MELBOURNE MAJOR STATISTICAL REGION							
2000							
September	1 267.5	447.4	1 714.9	113.3	1 828.2	6.2	65.3
October	1 274.4	436.2	1 710.6	101.8	1 812.4	5.6	64.7
November	1 266.4	436.1	1 702.5	99.6	1 802.0	5.5	64.2
December	1 293.8	428.5	1 722.3	103.2	1 825.6	5.7	65.0
2001							
January	1 262.3	409.9	1 672.2	110.1	1 782.3	6.2	63.3
February	1 279.2	432.3	1 711.5	122.2	1 833.7	6.7	65.1
March	1 266.5	433.8	1 700.2	125.7	1 825.9	6.9	64.7
April	1 272.6	441.7	1 714.4	115.2	1 829.5	6.3	64.8
May	1 269.6	448.8	1 718.4	115.2	1 833.6	6.3	64.8
June	1 255.4	463.8	1 719.2	107.3	1 826.5	5.9	64.5
July	1 267.2	457.4	1 724.5	108.2	1 832.7	5.9	64.6
August	1 256.2	456.6	1 712.8	108.1	1 820.8	5.9	64.1
September	1 293.9	447.3	1 741.2	116.7	1 857.9	6.3	65.2
October	1 278.1	443.1	1 721.2	124.1	1 845.3	6.7	64.7
November	1 278.7	445.9	1 724.6	108.4	1 833.0	5.9	64.1
BARWON-WESTERN DISTRICT STATISTICAL REGION							
2000							
September	109.7	44.0	153.7	15.4	169.1	9.1	59.2
October	110.2	47.5	157.7	12.7	170.5	7.5	60.4
November	114.0	47.8	161.8	10.7	172.5	6.2	60.4
December	119.4	52.7	172.1	10.0	182.1	5.5	62.1
2001							
January	118.3	41.9	160.3	8.8	169.1	5.2	59.2
February	123.4	47.7	171.1	12.8	183.9	6.9	62.7
March	120.1	42.8	162.9	11.4	174.3	6.5	62.0
April	125.8	48.7	174.5	11.0	185.5	5.9	62.8
May	116.5	51.6	168.1	9.0	177.1	5.1	61.9
June	113.0	57.8	170.8	7.7	178.5	4.3	63.1
July	115.8	56.0	171.8	8.6	180.3	4.8	62.9
August	111.9	55.0	166.9	8.8	175.8	5.0	60.3
September	115.8	58.6	174.4	5.7	180.1	3.1	61.5
October	118.1	54.9	173.0	10.2	183.2	5.6	62.2
November	118.3	56.5	174.8	9.3	184.1	5.0	62.0
CENTRAL HIGHLANDS-WIMMERA STATISTICAL REGION							
2000							
September	70.1	25.8	95.9	6.5	102.4	6.4	61.8
October	72.3	27.4	99.8	6.8	106.6	6.4	62.0
November	73.5	27.1	100.6	7.1	107.7	6.6	62.5
December	73.8	22.0	95.8	8.3	104.1	8.0	64.2
2001							
January	67.2	26.3	93.5	9.4	103.0	9.2	63.5
February	68.9	29.1	98.1	6.7	104.8	6.4	64.9
March	66.3	33.3	99.6	7.1	106.7	6.7	64.1
April	60.3	33.1	93.5	4.8	98.2	4.8	61.6
May	58.2	32.4	90.6	5.4	96.1	5.7	60.8
June	59.5	33.9	93.4	6.9	100.3	6.9	61.0
July	54.8	36.6	91.4	6.0	97.4	6.1	58.5
August	52.1	35.6	87.7	8.7	96.4	9.0	59.7
September	54.9	31.7	86.5	9.6	96.1	9.9	60.9
October	53.6	34.5	88.2	8.5	96.7	8.8	58.7
November	53.9	28.4	82.3	7.0	89.3	7.8	56.7

For footnotes see end of table.

...continued

Month	Employed			Unemployed '000	Labour force '000	Unemployment rate %	Participation rate %
	Full-time '000	Part-time '000	Total '000				
LODDON-MALLEE STATISTICAL REGION							
2000							
September	68.7	34.7	103.4	9.4	112.8	8.3	61.9
October	72.9	31.2	104.1	5.8	109.8	5.2	60.3
November	72.0	30.1	102.1	6.3	108.5	5.8	58.9
December	81.0	34.5	115.5	9.4	124.9	7.5	63.0
2001							
January	75.3	38.7	114.0	12.4	126.4	9.8	63.4
February	78.2	35.7	113.9	9.8	123.7	7.9	62.6
March	75.9	37.8	113.7	9.3	123.0	7.5	62.0
April	77.5	36.0	113.5	9.8	123.3	8.0	62.9
May	73.7	35.2	108.9	10.0	118.9	8.4	61.1
June	74.4	35.9	110.4	9.9	120.2	8.2	61.5
July	72.0	34.8	106.8	10.0	116.8	8.6	61.6
August	77.7	33.1	110.8	11.0	121.9	9.1	63.2
September	77.3	37.6	114.9	11.9	126.8	9.4	64.7
October	79.8	37.9	117.7	9.2	126.9	7.3	65.5
November	82.5	36.4	118.9	7.8	126.7	6.1	63.7
GOULBURN-OVENS-MURRAY STATISTICAL REGION							
2000							
September	102.8	37.8	140.6	9.5	150.1	6.3	66.0
October	98.2	34.7	132.9	10.0	143.0	7.0	62.8
November	96.0	35.1	131.1	9.9	140.9	7.0	63.1
December	100.2	36.5	136.7	9.6	146.3	6.6	66.4
2001							
January	98.7	38.6	137.4	11.6	149.0	7.8	67.5
February	94.5	36.1	130.6	7.5	138.1	5.4	65.1
March	89.7	40.1	129.8	9.5	139.3	6.8	64.1
April	86.9	36.8	123.7	7.5	131.2	5.7	62.3
May	92.6	37.8	130.4	9.2	139.6	6.6	62.7
June	95.6	40.8	136.4	6.3	142.7	4.4	64.3
July	94.3	44.1	138.4	7.0	145.4	4.8	63.6
August	90.0	46.0	135.9	7.7	143.7	5.4	62.9
September	96.1	37.6	133.7	7.1	140.8	5.1	62.2
October	95.5	39.4	134.9	6.3	141.2	4.5	63.1
November	95.3	42.9	138.1	9.0	147.1	6.1	65.6
ALL GIPPSLAND STATISTICAL REGION							
2000							
September	65.1	30.6	95.7	7.7	103.4	7.4	61.5
October	66.3	28.4	94.7	7.2	101.9	7.1	61.3
November	68.7	26.3	95.0	7.6	102.6	7.4	61.6
December	60.2	26.1	86.3	7.7	94.0	8.2	59.0
2001							
January	65.1	23.2	88.3	8.6	96.9	8.9	58.1
February	62.0	24.1	86.1	12.6	98.7	12.8	57.5
March	62.9	26.0	88.8	10.1	98.9	10.2	56.9
April	62.5	28.7	91.1	7.7	98.8	7.8	55.9
May	67.3	29.3	96.6	8.6	105.2	8.1	59.1
June	61.5	30.4	91.9	8.3	100.3	8.3	57.1
July	61.5	26.5	88.0	7.9	95.9	8.2	56.9
August	60.6	28.4	88.9	7.7	96.6	7.9	58.5
September	60.1	30.2	90.2	7.4	97.6	7.6	58.7
October	58.9	29.9	88.8	6.5	95.2	6.8	58.7
November	56.2	29.7	85.9	5.8	91.7	6.4	56.8

(a) Civilian population aged 15 years and over. From April 2001 the Labour Force Survey was conducted using a redesigned questionnaire containing additional data items and some minor definitional changes. Although the impact on core labour force series has been minor, revisions have been made to estimates previously published to ensure continuity. The revised series were released on 3 May 2001. Information Paper: Implementing the Redesigned Labour Force Survey Questionnaire (Cat. no. 6295.0) contains further information about the questionnaire changes and the revised series. For details on the content of the redesigned questionnaire, see Information Paper: Questionnaires Used in the Labour Force Survey (Cat. no. 6232.0)

Source: Labour Force, Victoria (Cat. no. 6202.2).

8

EMPLOYED PERSONS, BY INDUSTRY(a)—NOVEMBER 2001

Industry division	Males	Females	Persons
	'000	'000	'000
Agriculture, forestry and fishing	61.2	34.5	95.7
Mining	3.4	0.0	3.4
Manufacturing	257.5	98.4	355.9
Electricity, gas and water supply	11.9	3.5	15.4
Construction	163.2	19.6	182.8
Wholesale trade	68.5	34.6	103.1
Retail trade	179.9	179.2	359.1
Accommodation, cafes and restaurants	38.7	52.4	91.1
Transport and storage	78.0	22.7	100.7
Communication services	29.4	16.5	45.9
Finance and insurance	46.9	52.8	99.7
Property and business services	144.9	110.1	254.9
Government administration and defence	39.7	44.4	84.1
Education	54.2	108.2	162.3
Health and community services	51.2	174.8	226.0
Cultural and recreational services	32.8	30.6	63.4
Personal and other services	41.6	39.5	81.1
Total	1 302.9	1 021.7	2 324.7

(a) From April 2001 the Labour Force Survey was conducted using a redesigned questionnaire containing additional items and some minor definitional changes. Revisions have been made to core labour force estimates to ensure continuity. However, counts of employed persons by industry, being non-core data items, have not been revised. Thus data from April 2001 onwards are not strictly comparable with earlier unrevised data. Further information is contained in footnotes to tables 6 and 7.

Source: ABS data available on request, Labour Force.

9

PART-TIME WORKERS(a), BY SEX

Month	Preferred to work more hours					Total part-time workers	Proportion of part-time workers preferring to work more hours
	Preferred not to work more hours	Had actively looked for more hours and were available to work more hours	Wanted to work full-time	All part-time workers who preferred to work more hours			
	'000	'000	'000	'000	'000	%	
MALES							
2001							
May	127.4	23.8	18.6	58.4	185.8	31.4	
August	126.0	24.4	19.6	64.2	190.2	33.8	
November	109.1	21.8	18.1	68.9	177.9	38.7	
FEMALES							
2001							
May	356.2	33.3	19.8	93.2	449.4	20.7	
August	365.1	33.8	20.4	99.3	464.4	21.4	
November	340.4	34.0	20.5	121.4	461.8	26.3	
PERSONS							
2001							
May	483.6	57.1	38.4	151.6	635.1	23.9	
August	491.2	58.2	40.0	163.5	654.7	25.0	
November	449.5	55.8	38.6	190.2	639.7	29.7	

(a) Civilian population aged 15 years and over. From April 2001 the Labour Force Survey was conducted using a redesigned questionnaire containing additional data items and some minor definitional changes. For details on the content of the redesigned questionnaire, see Information Paper: Questionnaires Used in the Labour Force Survey (Cat. no. 6232.0). Additional quarters of data will be available in future issues.

Source: ABS data available on request, Labour Force.

10

DURATION OF UNEMPLOYMENT, BY SEX AND MAJOR STATISTICAL REGION

Month	Melbourne MSR			Balance of Victoria MSR			Victoria		
	Males '000	Females '000	Persons '000	Males '000	Females '000	Persons '000	Males '000	Females '000	Persons '000
NUMBER OF PERSONS UNEMPLOYED FOR UNDER 13 WEEKS									
2001									
April	31.4	26.9	58.3	8.5	8.1	16.6	39.9	35.0	75.0
May	25.6	25.6	51.3	9.8	6.9	16.7	35.4	32.5	68.0
June	24.3	22.8	47.1	8.7	6.4	15.1	33.0	29.2	62.2
July	28.9	24.6	53.5	8.0	4.4	12.4	36.9	28.9	65.9
August	30.8	22.9	53.7	9.9	5.6	15.5	40.7	28.6	69.3
September	32.3	25.2	57.5	9.8	7.9	17.6	42.1	33.0	75.1
October	36.0	24.5	60.4	9.4	6.3	15.6	45.3	30.7	76.1
November	29.4	23.5	52.9	9.9	7.8	17.7	39.3	31.3	70.6
NUMBER OF PERSONS UNEMPLOYED FOR 13 AND UNDER 52 WEEKS									
2001									
April	20.9	14.2	35.1	5.1	5.1	10.2	26.0	19.2	45.3
May	22.2	19.1	41.3	6.6	6.7	13.4	28.9	25.8	54.7
June	18.1	17.4	35.4	7.0	5.2	12.2	25.1	22.6	47.7
July	19.3	15.7	35.0	8.2	7.3	15.5	27.5	23.0	50.5
August	19.8	14.8	34.5	9.6	7.4	17.1	29.4	22.2	51.6
September	22.6	15.2	37.7	11.2	*4.3	15.5	33.8	19.5	53.2
October	22.8	19.0	41.8	9.1	*4.3	13.4	31.9	23.3	55.2
November	22.2	15.1	37.3	6.9	*4.0	10.9	29.1	19.1	48.2
NUMBER OF PERSONS UNEMPLOYED FOR 52 WEEKS AND OVER									
2001									
April	13.2	8.6	21.8	9.6	*4.3	13.9	22.8	12.9	35.7
May	11.7	10.9	22.6	6.8	5.3	12.2	18.6	16.2	34.8
June	15.7	9.1	24.8	6.2	5.6	11.7	21.9	14.6	36.5
July	12.4	7.4	19.7	5.8	5.7	11.5	18.2	13.0	31.2
August	12.7	7.1	19.8	6.3	5.1	11.3	18.9	12.2	31.1
September	12.9	8.5	21.4	4.9	*3.6	8.5	17.8	12.1	29.9
October	11.6	10.3	21.9	7.9	*3.7	11.6	19.5	14.0	33.5
November	8.8	9.4	18.2	6.2	*4.1	10.3	15.0	13.5	28.5
TOTAL UNEMPLOYED PERSONS									
2001									
April	65.5	49.7	115.2	23.3	17.5	40.8	88.8	67.1	155.9
May	59.6	55.6	115.2	23.2	19.0	42.2	82.8	74.6	157.4
June	58.1	49.2	107.3	21.9	17.2	39.1	80.0	66.4	146.4
July	60.6	47.6	108.2	22.0	17.3	39.4	82.6	64.9	147.5
August	63.2	44.8	108.1	25.8	18.2	43.9	89.0	63.0	152.0
September	67.8	48.8	116.7	25.9	15.7	41.6	93.7	64.6	158.3
October	70.3	53.7	124.1	26.4	14.3	40.6	96.7	68.0	164.7
November	60.4	48.0	108.4	23.0	15.9	38.9	83.4	63.9	147.3

Source: ABS data available on request, Labour Force.

11

JOB VACANCIES

Month	Victoria				Australia
	Job vacancies '000	Sector		Job vacancy rate	Job vacancy rate
		Public	Private	%	%
2000					
August	38.8	4.1	34.7	1.86	1.59
November	35.2	5.0	30.2	1.69	1.46
2001					
February	29.5	3.7	25.7	1.41	1.30
May	23.8	3.2	20.6	1.11	1.10
August	28.7	3.8	24.9	1.39	1.24
November	25.3	3.0	22.3	1.23	1.12

Source: Job Vacancies, Australia (Cat. no. 6354.0).

12

INDUSTRIAL DISPUTES CAUSING STOPPAGE OF WORK

Month	Disputes		Employees involved						Working days lost	
	Commenced in period	Total	Newly involved	Total	Manufacturing	Construction	Education, health, community services	Other industries	Total	Rate per '000 employee 12 months ended
	no.	no.	'000	'000	'000	'000	'000	'000	'000	no.
2000										
July	22	27	7.3	9.9	1.0	3.6	2.0	0.5	7.1	114
August	25	36	7.0	8.1	11.2	1.4	0.3	0.8	13.8	86
September	21	31	10.4	12.0	8.0	2.0	0.7	0.6	11.4	79
October	16	24	9.6	11.1	7.9	8.7	—	0.2	16.8	83
November	22	28	2.2	2.6	5.4	0.9	—	0.8	7.1	73
December	15	19	2.3	2.6	3.2	0.4	0.2	0.5	4.2	71
2001										
January	18	21	2.6	2.7	2.2	1.3	—	0.1	3.6	69
February	20	23	2.7	2.9	9.2	1.5	—	0.1	10.8	64
March	22	25	11.1	11.8	3.6	8.2	—	1.5	13.3	60
April	20	25	1.8	2.8	1.6	0.3	—	1.8	3.7	57
May	17	20	7.8	8.3	6.8	4.3	—	2.3	13.5	58
June	r17	r21	2.1	2.9	9.0	1.6	—	0.1	10.8	58
July	24	34	4.7	5.4	12.9	1.0	0.2	0.5	14.9	62
August	18	25	7.1	8.1	2.6	10.4	0.9	0.0	14.3	62
September	19	25	3.2	3.4	0.9	0.9	0.1	0.6	3.9	58

Source: Industrial Disputes, Australia (Cat. no. 6321.0); ABS data available on request, Industrial Disputes.

AVERAGE WEEKLY EARNINGS OF EMPLOYEES, BY SEX: ALL SERIES

	Males			Females			Persons		
	Full-time adult ordinary time earnings	Full-time adult total earnings	All males total earnings	Full-time adult ordinary time earnings	Full-time adult total earnings	All females total earnings	Full-time adult ordinary time earnings	Full-time adult total earnings	All employees total earnings
ORIGINAL (\$)									
2000									
May	799.10	850.10	739.60	706.00	722.60	504.80	765.90	804.70	626.30
August	813.10	861.40	741.80	724.10	740.40	513.80	781.60	818.60	632.30
November	808.70	857.00	737.80	716.20	732.70	509.80	776.20	813.30	627.60
2001									
February	826.20	865.60	748.00	736.60	749.90	533.10	794.00	824.00	645.20
May	836.50	883.60	761.10	733.40	747.30	519.60	799.60	834.90	644.10
August	853.80	899.10	770.50	749.10	763.60	527.40	816.80	851.30	653.60
SEASONALLY ADJUSTED (\$)									
2000									
May	798.50	850.80	744.30	706.40	723.20	505.30	766.00	805.70	628.50
August	816.00	864.30	747.80	723.80	740.40	514.20	782.10	819.40	635.60
November	809.80	852.60	732.50	714.80	729.30	512.40	775.80	809.80	626.80
2001									
February	822.70	866.50	742.70	738.10	752.70	529.60	793.90	825.80	640.50
May	836.10	884.40	766.00	734.00	748.20	520.10	799.80	836.00	646.50
August	856.70	902.00	776.60	748.50	763.30	527.50	817.10	852.00	656.80
TREND ESTIMATES (\$)									
2000									
May	802.10	852.70	740.30	708.20	724.20	502.30	768.70	806.90	625.10
August	809.00	856.50	741.30	716.50	732.60	511.50	775.90	812.30	630.70
November r	814.40	859.50	740.40	723.90	739.20	518.50	782.20	816.90	633.80
2001									
February r	823.70	868.40	746.90	730.80	745.30	522.00	791.00	824.70	638.60
May r	837.20	883.00	760.80	738.50	752.90	524.80	802.20	836.60	646.90
August	854.10	901.10	777.80	747.70	762.30	527.00	815.60	851.10	656.30
PERCENTAGE CHANGE (FROM MAY 2001 TO AUGUST 2001)									
Original	2.1	1.8	1.2	2.1	2.2	1.5	2.2	2.0	1.5
Seasonally Adjusted	2.5	2.0	1.4	2.0	2.0	1.4	2.2	1.9	1.6
Trend	2.0	2.0	2.2	1.2	1.2	0.4	1.7	1.7	1.5
PERCENTAGE CHANGE (FROM AUGUST 2000 TO AUGUST 2001)									
Original	5.0	4.4	3.9	3.5	3.1	2.7	4.5	4.0	3.4
Seasonally Adjusted	5.0	4.4	3.9	3.4	3.1	2.6	4.5	4.0	3.3
Trend	5.6	5.2	4.9	4.4	4.1	3.0	5.1	4.8	4.1

Source: Average Weekly Earnings, Australia (Cat. no. 6302.0).

14

WAGE COST INDEXES(a)

Quarter ended	Total hourly rates of pay excluding bonuses		Ordinary time hourly rates of pay excluding bonuses	
	Index number	% change from previous quarter	Index number	% change from previous quarter
1997				
September	100.0	..	100.0	..
December	100.7	0.7	100.7	0.7
1998				
March	101.6	0.9	101.6	0.9
June	102.1	0.5	102.1	0.5
September	103.2	1.1	103.2	1.1
December	103.8	0.6	103.8	0.6
1999				
March	104.5	0.7	104.5	0.7
June	105.1	0.6	105.0	0.5
September	106.1	1.0	106.1	1.0
December	106.8	0.7	106.7	0.6
2000				
March	107.6	0.7	107.5	0.7
June	108.3	0.7	108.2	0.7
September	109.4	1.0	109.4	1.1
December	110.4	0.9	110.3	0.8
2001				
March	111.2	0.7	111.2	0.8
June	112.2	0.9	112.1	0.8
September	113.6	1.2	113.5	1.2

(a) Base of each index: September quarter 1997 = 100.0.

Source: Wage Cost Index, Australia (Cat. no. 6345.0).

15

CONSUMER PRICE INDEX(a), BY GROUP: MELBOURNE

Group	Sep qtr 2000	Jun qtr 2001	Sep qtr 2001	% change from Jun qtr 2001 to Sep qtr 2001		% change from Sep qtr 2000 to Sep qtr 2001	
				Melbourne	Weighted average of eight capital cities	Melbourne	Weighted average of eight capital cities
Food	131.6	138.8	140.1	0.9	0.7	6.5	5.6
Alcohol and tobacco	187.6	198.0	200.7	1.4	1.1	7.0	5.9
Clothing and footwear	116.2	113.2	112.7	-0.4	-1.2	-3.0	-2.1
Housing	97.8	98.8	101.4	2.6	1.5	3.7	2.4
Household furnishings, supplies and services	117.9	119.5	119.0	-0.4	-0.3	0.9	2.1
Health	171.9	177.7	177.9	0.1	-0.1	3.5	2.7
Transportation	134.5	138.6	135.6	-2.2	-1.7	0.8	1.0
Communication	105.4	103.7	103.5	-0.2	-0.2	-1.8	-1.9
Recreation	127.8	125.1	125.7	0.5	0.9	-1.6	0.5
Education	179.7	187.6	187.7	0.1	—	4.5	4.3
Miscellaneous	159.3	159.9	161.4	0.9	1.0	1.3	4.2
All groups	130.4	133.0	133.6	0.5	0.3	2.5	2.5

(a) Base of each index: 1989-90 = 100.0.

Source: Consumer Price Index, Australia (Cat. no. 6401.0).

16

HOUSE PRICE INDEXES(a): MELBOURNE AND WEIGHTED AVERAGE OF EIGHT CAPITAL CITIES

Period	Melbourne				Weighted average of eight capital cities			
	Established homes		Project homes		Established homes		Project homes	
	Index number	% change from previous period	Index number	% change from previous period	Index number	% change from previous period	Index number	% change from previous period
1998-99	126.8	10.9	112.5	3.6	130.4	6.2	113.1	2.5
1999-2000	144.6	14.0	122.0	8.4	142.3	9.1	120.7	6.7
2000-01	159.1	10.0	136.9	12.2	152.8	7.4	134.9	11.8
2000								
June	151.6	4.0	124.8	0.4	147.3	2.4	122.9	0.4
September	143.6	-5.3	135.7	8.7	147.1	-0.1	134.3	9.3
December	157.5	9.7	136.4	0.5	150.6	2.4	134.8	0.4
2001								
March	161.8	2.7	138.0	1.2	153.9	2.2	135.1	0.2
June	173.3	7.1	137.6	-0.3	159.4	3.6	135.4	0.2
September	187.2	8.0	140.0	1.7	167.7	5.2	136.4	0.7

(a) Base of each index: 1988-1989 = 100.0.

Source: House Price Indexes (Cat. no. 6416.0)

17

PRICE INDEXES OF MATERIALS USED IN BUILDING(a): MELBOURNE

Group	Sep qtr 2000	Jun qtr 2001	Sep qtr 2001	% change from Jun qtr 2001 to Sep qtr 2001		% change from Sep qtr 2000 to Sep qtr 2001	
				Melbourne	Weighted average of six state capital cities	Melbourne	Weighted average of six state capital cities
House building (all groups)	123.2	123.1	124.3	1.0	0.2	0.9	0.2
Other than house building							
Structural timber	126.2	119.7	122.0	1.9	1.3	-3.3	-5.3
Clay bricks	130.2	130.6	130.8	0.2	-0.1	0.5	-0.1
Ready mixed concrete	108.6	107.2	106.4	-0.7	-0.8	-2.0	-3.9
Precast concrete products	138.2	149.2	151.9	1.8	0.3	9.9	3.1
Steel decking and cladding	113.2	111.9	111.5	-0.4	-0.1	-1.5	0.4
Structural steel	101.2	102.0	101.1	-0.9	-0.4	-0.1	0.5
Reinforcing steel bar, mesh, etc.	89.3	88.4	88.6	0.2	0.8	-0.8	1.5
Aluminium windows	111.5	114.5	114.5	0.0	0.1	2.7	1.8
Fabricated steel products	124.1	126.0	126.8	0.6	0.3	2.2	2.3
Builders' hardware	135.2	138.4	136.0	-1.7	-0.2	0.6	3.4
Sand and aggregate	118.3	125.5	126.2	0.6	1.0	6.7	3.1
Carpet	93.5	93.7	91.7	-2.1	-0.4	-1.9	1.5
Paint and other coatings	165.3	169.0	177.3	4.9	0.7	7.3	1.4
Non-ferrous pipes and fittings	120.8	131.5	133.0	1.1	-2.5	10.1	3.4
All plumbing materials	128.4	132.9	134.2	1.0	0.0	4.5	1.8
All groups excluding electrical materials and mechanical services	114.1	116.2	116.4	0.2	0.1	2.0	1.5
All electrical materials	112.8	118.8	118.3	-0.4	-0.1	4.9	2.6
All mechanical services	115.4	118.1	119.7	1.4	0.5	3.7	2.2
All groups	114.0	116.4	116.8	0.3	0.3	2.5	1.7

(a) Base of each index: 1989-1990 = 100.0.

Source: ABS data available on request, Producer Price Indexes, Australia (Cat. no. 6427.0).

<i>Manufacturing subdivision or group</i>	<i>Jun qtr 2000</i>	<i>Sep qtr 2000</i>	<i>Dec qtr 2000</i>	<i>Mar qtr 2001</i>	<i>Jun qtr 2001</i>	<i>Sep qtr 2001</i>	<i>% change from Jun qtr 2001 to Sep qtr 2001</i>	<i>% change from Sep qtr 2000 to Sep qtr 2001</i>
Food, beverages and tobacco	112.2	116.8	118.3	120.8	128.0	135.7	6.0	16.2
Textiles, clothing, footwear & leather								
Textiles and textile products	96.8	98.7	100.7	102.9	106.7	105.2	-1.4	6.6
Knitting mills and clothing	103.7	102.9	107.0	106.3	109.7	109.5	-0.2	6.4
Footwear	111.7	112.1	120.1	122.6	126.3	127.8	1.2	14.0
Leather and leather products	104.3	103.4	106.9	108.4	109.9	102.1	-7.1	-1.3
Wood & paper products								
Sawmilling and timber products	127.7	129.0	131.7	133.1	137.4	136.5	-0.7	5.8
Paper and paper products	105.6	107.1	110.3	111.0	111.6	110.1	-1.3	2.8
Printing and publishing	109.6	112.2	116.7	117.9	119.2	118.6	-0.5	5.7
Petroleum, coal, chemical & assoc. products								
Petroleum and coal products	191.6	205.9	240.5	204.3	220.1	197.7	-10.2	-4.0
Chemicals	121.5	122.5	124.8	126.9	130.8	122.3	-6.5	-0.2
Rubber and plastics	116.4	119.6	122.4	125.4	128.2	124.8	-2.7	4.3
Non-metallic mineral products	110.7	111.1	110.8	111.5	112.5	112.1	-0.4	0.9
Metal products								
Basic mineral products	96.7	97.6	102.3	101.7	105.2	106.0	0.8	8.6
Fabricated metal products	107.8	109.7	111.9	112.0	113.1	111.3	-1.6	1.5
Machinery and equipment								
Transport equipment and parts	122.9	123.1	125.3	125.2	127.2	124.6	-2.0	1.2
Electronic equipment & other machinery	105.6	106.1	107.9	108.1	109.8	107.3	-2.3	1.1
Other manufacturing	122.4	123.4	126.3	125.7	126.9	125.2	-1.3	1.5

(a) Base of each index: 1989-90 = 100.0.

Source: *Producer Price Indexes, Australia* (Cat. no. 6427.0).

<i>Manufacturing subdivision or group</i>	<i>Jun qtr 2000</i>	<i>Sep qtr 2000</i>	<i>Dec qtr 2000</i>	<i>Mar qtr 2001</i>	<i>Jun qtr 2001</i>	<i>Sep qtr 2001</i>	<i>% change from Jun qtr 2001 to Sep qtr 2001</i>	<i>% change from Sep qtr 2000 to Sep qtr 2001</i>
Food, beverages and tobacco	127.4	127.2	129.3	132.0	136.9	137.6	0.5	8.2
Textiles, clothing, footwear & leather								
Textiles and textile products	106.7	106.4	108.0	109.4	110.5	110.3	-0.2	3.7
Knitting mills, clothing, footwear and leather	119.6	119.1	120.6	121.2	121.9	121.7	-0.2	2.2
Wood & paper products								
Log sawmilling and other wood products	130.5	131.3	131.9	130.1	129.5	130.5	0.8	-0.6
Paper and paper products	111.5	113.1	115.3	115.5	115.6	115.9	0.3	2.5
Printing, publishing and recorded media	149.8	151.5	152.1	152.4	153.6	155.7	1.4	2.8
Petroleum, coal, chemical & assoc. products								
Petroleum and coal products	160.2	190.5	207.0	174.5	188.8	170.4	-9.7	-10.6
Chemicals	114.5	114.0	116.1	116.1	116.8	115.4	-1.2	1.2
Rubber and plastics	115.9	116.2	118.4	120.0	121.6	122.9	1.1	5.8
Non-metallic mineral products	117.9	117.8	118.0	117.7	117.7	117.6	-0.1	-0.2
Metal products								
Basic metal products	111.1	112.0	117.4	115.6	116.4	110.9	-4.7	-1.0
Fabricated metal products	116.8	116.6	116.3	116.7	117.2	118.0	0.7	1.2
Machinery and equipment								
Transport equipment and parts	121.2	121.5	123.9	124.7	126.3	127.5	1.0	4.9
Electronic equipment and other machinery	110.5	110.6	111.8	112.4	114.2	114.2	0.0	3.3
Other manufacturing	125.3	126.8	128.9	129.2	130.4	131.0	0.5	3.3

(a) Base of each index: 1989-90 = 100.0.

Source: *Producer Price Indexes, Australia (Cat. no. 6427.0)*.

<i>Period</i>	<i>Live animals, animal products</i>	<i>Vegetable products</i>	<i>Products of chemical or allied industries</i>	<i>Textiles and textile articles</i>	<i>Gold, diamonds and coin</i>	<i>Motor vehicles, aircraft and vessels</i>	<i>All groups</i>
1998-99	100.7	90.9	95.6	61.4	93.1	113.0	95.7
1999-2000	107.8	83.9	101.5	62.5	93.5	113.2	98.0
2000-01	126.4	99.8	120.1	74.3	106.0	127.0	114.8
1998							
December	100.9	90.9	98.5	59.2	95.8	112.9	96.9
1999							
March	99.6	88.6	93.5	58.8	92.5	111.6	93.1
June	98.5	83.9	89.8	60.0	86.2	110.2	90.6
September	102.7	80.8	93.2	60.5	83.1	110.5	91.5
December	105.0	83.4	96.3	62.1	94.4	111.5	95.4
2000							
March	107.8	83.1	104.2	60.2	96.0	112.4	99.5
June	115.6	88.1	112.4	67.3	100.5	118.4	105.7
September	116.6	90.9	114.9	69.6	102.1	121.0	107.9
December	124.1	98.4	122.5	71.9	107.9	128.0	115.8
2001							
March	127.5	102.9	121.0	74.8	105.9	127.8	115.3
June	137.2	107.1	121.9	80.8	108.1	131.3	120.3
September	140.1	107.2	118.6	79.4	112.6	132.6	119.2

(a) Base of each index: 1989-1990 = 100.0.

(b) AHECC Sections are 01, 02, 06, 11, 14 and 17.

Source: *International Trade Price Indexes, Australia (Cat. no. 6457.0)*.

21

BUSINESS EXPECTATIONS, SHORT-TERM OUTLOOK(a)

Business performance indicators	Expected aggregate change over the previous quarter								Mar qtr 2002	
	Mar qtr 2000	Jun qtr 2000	Sep qtr 2000	Dec qtr 2000	Mar qtr 2001	Jun qtr 2001	Sep qtr 2001	Dec qtr 2001	Victoria	Australia
	%	%	%	%	%	%	%	%	%	%
Trading performance										
Operating income	—	1.4	1.2	1.7	-2.6	-0.4	-0.3	1.8	-3.5	-3.0
Selling prices	0.3	—	0.2	—	—	-0.4	-0.4	-0.3	0.5	-0.2
Profit	-7.7	9.9	3.9	5.1	-30.5	-6.6	-5.1	10.4	-31.9	-26.3
Investment										
Capital expenditure	2.3	4.5	1.7	4.0	1.6	4.8	3.2	-2.0	1.6	1.0
Inventories	-1.3	-0.3	-1.0	0.2	-1.6	-0.7	-1.9	-1.1	-0.9	-1.5
Employment										
Full-time equivalent	-0.2	0.0	-0.3	-0.8	-1.5	-0.5	-0.3	-1.4	-1.0	-0.8

(a) Short-term outlook refers to the expected change between the calendar quarter in which the data are reported and the following calendar quarter. For example, the estimates for December quarter 2001 reflect the expectations of businesses during September quarter 2001 for future performance over the following calendar quarter.

Source: Australian Business Expectations (Cat. no. 5250.0).

22

BUSINESS EXPECTATIONS, MEDIUM-TERM OUTLOOK(a)

Business performance indicators	Expected aggregate change over the same quarter of the previous year								Dec qtr 2002	
	Dec qtr 2000	Mar qtr 2001	Jun qtr 2001	Sep qtr 2001	Dec qtr 2001	Mar qtr 2002	Jun qtr 2002	Sep qtr 2002	Victoria	Australia
	%	%	%	%	%	%	%	%	%	%
Trading performance										
Operating income	1.9	2.3	2.0	2.1	1.4	1.9	0.7	0.7	1.3	1.5
Selling prices	0.8	1.2	1.3	1.0	0.7	0.2	0.3	-0.2	1.8	0.9
Profit	-5.0	13.1	11.6	7.2	-5.4	5.7	4.8	9.1	6.8	8.1
Investment										
Capital expenditure	2.4	3.2	2.4	0.4	2.3	5.5	3.5	-2.0	3.1	5.3
Inventories	-0.2	-0.1	-0.7	-1.2	-1.3	-0.1	-1.8	-2.2	-1.4	-1.3
Employment										
Full-time equivalent	0.3	0.3	-0.6	0.3	0.1	0.6	-0.9	-0.9	-1.0	-0.1

(a) Medium-term outlook refers to the expected change between the calendar quarter in which the data are reported and the same calendar quarter in the following year. For example, the estimates for September quarter 2002 reflect the expectations of businesses during September quarter 2001 for future performance over the following four calendar quarters.

Source: Australian Business Expectations (Cat. no. 5250.0).

23

PRIVATE NEW CAPITAL EXPENDITURE, BY TYPE OF ASSET AND INDUSTRY: ORIGINAL

Period	Selected industries				Type of asset		
	Mining	Manufacturing	Other selected industries	Total	New buildings and structures	Equipment, plant and machinery	All assets
	\$m	\$m	\$m	\$m	\$m	\$m	\$m
1998-99	1 234	2 954	7 180	11 368	3 211	8 157	11 368
1999-2000	615	3 363	6 999	10 977	2 761	8 217	10 977
2000-01 r	363	3 121	6 606	10 090	2 226	7 864	10 090
2000							
June	151	796	1 819	2 766	656	2 110	2 766
September	77	965	1 623	2 665	566	2 099	2 665
December	108	771	1 729	2 607	598	2 010	2 607
2001							
March	81	575	1 528	2 184	436	1 748	2 184
June r	97	809	1 727	2 634	626	2 008	2 634
September	147	578	1 633	2 358	360	1 998	2 358

Source: Private New Capital Expenditure, State Estimates (Cat. no. 5646.0); ABS data available on request, Private New Capital Expenditure survey.

24

PRIVATE NEW CAPITAL EXPENDITURE, BY TYPE OF ASSET: SEASONALLY ADJUSTED AND TREND

Period	Seasonally adjusted				Trend			
	New buildings and structures		Equipment, plant and machinery		All assets		All assets	
	\$m	\$m	\$m	%	\$m	\$m	\$m	%
1998-99	3 230	8 144	11 376	3.2	3 120	8 147	11 267	0.6
1999-2000	2 760	8 212	10 972	-3.6	2 701	8 267	10 968	-2.7
2000-01 r	2 222	7 875	10 096	-8.0	2 173	7 863	10 035	-8.5
2000								
June	663	2 001	2 664	-1.6	627	2 043	2 670	-2.3
September	541	2 107	2 648	-0.6	r 574	r 2 012	r 2 586	r -3.1
December	556	1 895	2 451	-7.4	r 549	r 1 971	r 2 520	r -2.6
2001								
March	492	1 970	2 462	0.4	r 541	r 1 938	r 2 479	r -1.6
June	r 633	r 1 902	r 2 535	3.0	r 509	r 1 941	r 2 450	r -1.2
September	343	2 006	2 349	-7.3	442	1 971	2 413	-1.5

Source: Private New Capital Expenditure, State Estimates (Cat. no. 5646.0).

25

BANK DEPOSITS: ALL BANKS

Month	Current bearing interest	Current not bearing interest	Term(a)	Investment savings	Other(b)	Total
	\$m	\$m	\$m	\$m	\$m	\$m
2000						
August	20 528	4 389	55 794	6 516	10 165	97 393
September	20 390	4 806	53 801	6 542	10 834	96 374
October	20 668	5 257	49 846	6 501	10 911	93 183
November	20 624	4 759	46 364	6 444	11 354	89 545
December	21 202	5 297	48 545	6 431	11 329	92 804
2001						
January	21 868	4 875	50 326	6 368	11 557	94 993
February	21 383	4 664	54 042	6 318	10 950	97 357
March	21 830	4 692	51 018	6 379	11 987	95 905
April	22 475	4 959	54 515	6 424	11 440	99 815
May	22 698	4 522	58 301	6 473	12 567	104 560
June	24 291	5 002	57 180	6 633	11 664	104 769
July	23 981	4 897	54 534	6 624	11 881	101 916
August	23 865	4 509	57 377	6 614	12 030	104 396
September	24 873	4 818	56 468	6 687	12 923	105 770
October	25 663	5 031	56 533	6 780	14 297	108 304

(a) Includes certificates of deposit.

(b) Includes statement savings and passbook/school savings.

Source: Unpublished data, Australian Prudential Regulating Authority.

26

COMMERCIAL FINANCE COMMITMENTS

Period	Fixed loan facilities						Revolving credit facilities	Total commercial finance
	Construction	Purchase of real property	Purchase of plant and equipment	Wholesale	Other	Total		
	\$m	\$m	\$m	\$m	\$m	\$m	\$m	\$m
1998-99	1 329.0	5 597.6	2 073.6	1 519.4	10 705.1	21 224.7	23 403.1	44 627.9
1999-2000	2 086.6	7 432.2	2 520.0	699.6	8 982.2	21 720.7	19 560.3	41 280.9
2000-01	1 846.5	7 529.9	2 680.4	944.0	11 614.6	24 615.4	19 569.6	44 185.0
2000								
October	160.4	523.3	179.2	66.1	989.0	1 918.0	1 203.5	3 121.5
November	181.7	581.8	204.1	105.3	497.9	1 570.8	1 464.4	3 035.2
December	134.6	527.8	223.4	93.7	651.9	1 631.3	2 353.6	3 984.9
2001								
January	115.7	555.7	172.6	92.8	491.3	1 428.1	1 591.2	3 019.3
February	97.1	516.2	196.1	50.1	1 641.2	2 500.5	1 825.1	4 325.6
March	240.9	659.9	240.7	70.6	1 362.9	2 574.9	1 508.0	4 083.0
April	133.5	617.8	249.9	65.0	422.5	1 488.7	1 369.9	2 858.6
May	74.9	819.3	228.1	75.0	1 395.0	2 592.2	1 834.2	4 426.5
June	141.1	1 106.1	357.0	83.4	1 736.5	3 424.0	1 885.2	5 309.2
July	193.1	934.7	279.0	84.7	1 534.4	2 025.9	1 233.8	3 272.9
August	129.5	995.5	280.0	84.3	607.9	2 097.2	1 448.8	3 545.9
September	105.4	861.5	287.8	n.a.	713.5	1 966.8	1 278.3	3 245.1
October	109.7	952.4	298.9	n.a.	991.1	2 352.0	1 694.9	4 046.9

Source: ABS data available on request, Lending Finance, Australia.

LEASE FINANCE COMMITMENTS(a), BY PURPOSE

<i>Period</i>	<i>Cars, station wagons etc.(b)</i>	<i>Trucks, trailers and buses(c)</i>	<i>Manu- facturing equip- ment</i>	<i>Agricultural machinery and equipment</i>	<i>Electronic data processing equipment</i>	<i>Office machines</i>	<i>Shop and office furniture(d)</i>	<i>Other goods(e)</i>	<i>Total lease finance</i>
	\$m	\$m	\$m	\$m	\$m	\$m	\$m	\$m	\$m
1998-99	836.1	280.9	228.0	76.6	262.7	183.0	56.5	203.2	2 126.9
1999-2000	638.0	233.8	221.6	43.1	355.7	181.1	61.4	144.1	1 878.9
2000-01	475.2	111.7	78.6	42.2	373.5	166.3	55.3	105.0	1 407.9
2000									
October	35.5	10.6	6.7	4.1	27.3	12.1	4.0	7.2	107.3
November	40.0	9.4	5.1	3.0	35.3	15.5	5.2	10.4	123.9
December	43.3	9.5	8.9	2.7	95.2	14.7	7.2	15.5	196.9
2001									
January	39.9	6.0	2.6	10.1	29.0	10.1	2.4	4.9	105.1
February	34.4	5.4	3.9	1.6	12.3	11.2	2.0	4.2	74.9
March	39.2	5.8	6.4	1.6	21.4	14.1	2.7	4.9	96.1
April	34.9	6.4	1.5	4.3	23.6	16.2	3.0	9.9	99.6
May	40.9	8.4	5.4	3.0	15.2	17.5	5.2	14.7	110.3
June	55.7	14.4	14.5	6.3	32.4	15.5	12.0	17.4	168.3
July	55.6	13.8	6.7	3.2	31.2	11.7	4.9	15.9	143.1
August	66.6	12.7	10.1	0.9	37.0	17.8	4.2	8.5	157.7
September	51.8	7.5	n.p.	n.p.	n.p.	n.p.	n.p.	5.2	129.6
October	51.3	11.5	n.p.	n.p.	n.p.	n.p.	n.p.	6.7	141.3

(a) Excludes leveraged leases.

(b) Includes small passenger vehicles.

(c) Includes coaches and other vehicles. Excludes other transport equipment.

(d) Includes fittings and equipment.

(e) Includes other transport equipment and construction and earthmoving equipment.

Source: ABS data available on request, *Lending Finance, Australia*.

Period	Fixed loan facilities					Revolving credit facilities				
	Purchase of motor vehicles (a)	Purchase of individual residential blocks of land	Debt consolidation & refinancing	Other(b)	All personal fixed loans	New and increased credit limits	Cancellations and reductions in credit limits	Total used and unused credit limits available at end of period(c)	Credit used at end of period(c)	Total personal finance
	\$m	\$m	\$m	\$m	\$m	\$m	\$m	\$m	\$m	\$m
1998-99	2 519.9	396.2	938.3	1 346.9	5 201.2	5 861.5	1 820.8	19 155.1	8 137.6	11 062.7
1999-2000	2 663.0	374.1	990.3	1 419.6	5 447.0	8 108.8	2 455.3	25 873.1	10 874.8	13 555.8
2000-01	2 588.1	411.0	1 080.9	1 369.2	5 449.3	8 166.8	3 137.3	28 866.6	12 772.6	13 616.0
2000										
October	213.5	27.8	81.1	105.7	428.1	579.3	270.4	25 032.7	11 146.1	1 007.5
November	222.6	32.4	93.0	103.7	451.7	769.2	224.6	25 571.8	11 463.0	1 220.9
December	219.9	29.9	76.7	111.5	438.0	649.4	206.0	26 134.2	11 693.5	1 087.4
2001										
January	207.4	24.5	79.1	98.2	409.2	587.0	283.4	26 425.0	11 807.8	996.1
February	199.3	30.7	88.7	105.9	424.6	555.6	239.8	26 853.0	12 033.2	980.1
March	223.5	40.0	95.4	117.0	475.8	702.8	228.7	27 332.1	12 126.7	1 178.6
April	191.4	37.9	86.7	108.9	424.9	577.9	279.4	27 593.4	12 233.4	1 002.8
May	227.6	53.1	116.5	135.8	533.0	790.8	266.0	28 116.3	12 512.2	1 323.8
June	223.2	50.7	120.5	156.9	551.2	972.9	307.5	28 866.6	12 772.6	1 524.0
July r	220.2	51.7	116.6	124.9	513.4	827.4	355.6	29 370.0	12 847.4	1 340.8
August	220.3	56.9	102.1	135.7	515.0	749.9	377.5	29 203.0	12 975.3	1 264.9
September	184.2	46.4	88.6	125.9	445.1	686.9	248.4	29 648.0	13 037.2	1 132.0
October	221.1	54.2	103.7	142.8	521.8	744.7	421.7	29 967.8	13 117.5	1 266.5

(a) Includes motor cycles, which last issue were included in 'Other'.

(b) Excludes motorcycles.

(c) This data item is a STOCK (i.e. balance at end of month) item. Users of the data should exercise care to ensure that this item is not aggregated.

Source: ABS data available on request, Lending Finance, Australia.

Period	Original series		Seasonally adjusted r		Trend estimates r	
	no.	\$m	no.	\$m	no.	\$m
VALUE						
1998-99	122 029	14 377	121 645	14 322	121 709	14 306
1999-2000	130 348	17 309	129 897	17 250	130 236	17 290
2000-01	126 452	16 667	126 695	16 689	126 535	16 686
2000						
October	10 210	1 252	10 058	1 239	10 237	1 275
November	11 282	1 388	10 084	1 311	10 323	1 295
December	10 153	1 330	10 814	1 384	10 349	1 318
2001						
January	9 104	1 231	10 335	1 354	10 335	1 344
February	9 349	1 230	9 751	1 296	10 416	1 387
March	11 278	1 561	10 724	1 462	10 633	1 449
April	10 197	1 412	10 759	1 510	11 005	1 530
May	13 146	1 821	11 642	1 632	11 485	1 623
June	12 149	1 744	12 018	1 723	11 962	1 715
July r	12 705	1 847	12 696	1 853	12 332	1 792
August	13 286	1 919	12 621	1 842	12 587	1 852
September	11 424	1 696	12 761	1 906	12 755	1 898
October	13 419	2 031	12 541	1 901	12 866	1 932
PERCENTAGE CHANGE (FROM PREVIOUS MONTH)						
2000						
October	9.0	7.4	1.3	-0.2	1.9	1.2
November	10.5	10.9	5.2	5.8	1.1	1.6
December	-10.0	-4.2	2.2	5.6	0.3	1.8
2001						
January	-10.3	-7.4	-4.4	-2.2	-0.3	2.0
February	2.7	-0.1	-5.7	-4.3	0.5	3.2
March	20.6	26.9	10.0	12.8	1.7	4.5
April	-9.6	-9.5	0.3	3.3	2.9	5.6
May	28.9	29.0	8.2	8.1	3.7	6.1
June	-7.6	-4.2	3.2	5.6	3.6	5.7
July r	4.6	5.9	5.6	7.5	3.4	4.5
August	4.6	3.9	-0.6	-0.6	2.1	3.3
September	-14.0	-11.6	1.1	3.5	1.3	2.5
October	17.5	19.8	-1.7	-0.3	0.9	1.8

(a) For owner occupation. Excludes alterations and additions. Includes refinancing.

Source: *Housing Finance for Owner Occupation, Australia (Cat. no. 5609.0)*; ABS data available on request, *Housing Finance for Owner Occupation*.

Period	First home buyers				Other home buyers			
	Number of dwellings financed	Number as proportion of all dwellings financed	Value of commitments	Average borrowing size	Number of dwellings financed	Number as proportion of all dwellings financed	Value of commitments	Average borrowing size
	no.	%	\$m	\$'000	no.	%	\$m	\$'000
1998-99	30 019	24.6	3 376.2	112.5	92 010	75.4	11 000.1	119.6
1999-2000	32 144	24.7	4 092.6	127.3	98 204	75.3	13 216.3	134.6
2000-01	30 479	24.1	3 736.1	122.6	95 873	75.9	12 930.4	134.7
2000								
October	2 434	23.8	278.7	114.5	7 776	76.2	972.8	125.1
November	2 728	24.2	317.5	116.4	8 554	75.8	1 071.0	125.2
December	2 416	23.8	289.2	119.7	7 737	76.2	1 040.6	134.5
2001								
January	1 984	21.8	261.5	131.8	7 120	78.2	969.7	136.2
February	1 977	21.1	241.6	122.2	7 372	78.9	988.6	134.1
March	2 291	20.3	296.7	129.5	8 987	79.7	1 263.6	140.6
April	2 331	22.9	305.6	131.1	7 866	77.1	1 106.0	140.6
May	3 053	23.2	396.0	129.7	10 093	76.8	1 425.1	141.2
June	2 947	24.3	396.7	134.6	9 202	75.7	1 348.1	146.5
July r	3 307	26.0	455.7	137.8	9 398	74.0	1 391.8	148.1
August	3 466	26.1	477.6	137.8	9 820	73.9	1 441.6	146.8
September	2 740	23.9	395.1	144.2	8 719	76.1	1 299.1	149.0
October	3 301	24.6	483.3	146.4	10 118	75.4	1 548.1	153.0

(a) For owner occupation. Excludes alterations and additions. Includes refinancing.

Source: Housing Finance for Owner Occupation, Australia (Cat. no. 5609.0); ABS data available on request, Housing Finance for Owner Occupation, Australia.

Period	Dwelling units(a)			Value of residential alterations, additions and conversions(b)	Total value of all building		
	no.	%	Value of new residential building(a) \$m		Value of all residential building \$m	Change from previous period \$m	%
ORIGINAL							
1998–99	39 722	9.0	4 552.0	951.2	5 503.1	8 628.8	10.3
1999–2000	50 133	26.2	6 418.0	1 211.0	7 629.0	10 840.8	25.6
2000–01	r 35 575	r -29.0	r 5 116.3	r 1 190.8	r 6 307.0	r 10 367.9	-4.4
2000							
September	2 562	-6.7	346.1	73.0	419.1	712.0	-4.1
October	2 099	-18.1	291.3	108.0	399.3	628.1	-11.8
November	3 114	48.4	438.5	97.8	536.3	826.7	31.6
December	3 015	-3.2	470.0	79.4	549.4	861.1	4.2
2001							
January	2 607	-13.5	387.3	73.2	460.5	727.3	-15.5
February	3 186	22.2	450.3	89.4	539.7	797.6	9.7
March	3 394	6.5	528.5	126.1	654.6	1 156.2	45.0
April	2 456	-27.6	365.6	78.8	444.3	791.2	-31.6
May	r 3 702	r 50.7	r 538.0	116.7	r 654.7	r 1 171.9	r 48.1
June	3 329	r -10.1	465.5	117.7	583.2	799.6	r -31.8
July	3 727	12.0	544.0	108.8	652.8	942.0	17.8
August	5 691	52.7	1 049.2	136.9	1 186.1	1 485.0	57.6
September	4 248	-25.4	585.9	130.5	716.4	951.6	-35.9
October	4 187	-1.4	618.4	130.5	748.8	1 184.6	24.5
November	3 757	-10.3	546.9	101.5	648.4	1 020.0	-13.9
SEASONALLY ADJUSTED							
2000							
September	2 609	2.6	354.1	72.9	426.9	r 701.4	r -0.7
October	2 223	-14.8	313.4	93.2	406.7	r 679.0	r -3.2
November	2 879	29.5	410.8	92.6	503.4	r 752.3	r 10.8
December	3 137	8.9	478.1	97.6	575.7	r 877.4	r 16.6
2001							
January	3 122	-0.5	458.4	90.3	548.7	r 854.4	r -2.6
February	2 949	-5.5	422.1	93.6	515.8	r 714.7	r -16.4
March	2 902	-1.6	434.4	108.9	543.3	r 971.4	r 35.9
April	2 602	-10.3	408.4	75.2	483.5	r 865.8	r -10.9
May	r 3 605	r 38.5	r 504.3	113.1	r 617.4	r 1 056.6	r 22.0
June	3 493	r -3.1	468.2	126.4	594.6	r 893.2	r -15.5
July	4 014	14.9	604.8	113.3	718.0	r 1 137.6	r 27.4
August	5 378	34.0	1 039.1	128.5	1 167.6	r 1 434.7	r 26.1
September	4 321	-19.6	589.3	134.1	723.4	933.8	-34.9
October	4 522	4.6	658.1	113.3	771.4	1 224.0	31.1
November	3 427	-24.2	529.5	93.3	622.8	973.7	-20.4

For footnotes see end of table.

...continued

Period	Dwelling units(a)				Total value of all building		
	no.	Change from previous period	Value of new residential building(a)	Value of residential alterations, additions and conversions(b)	Value of all residential building	Change from previous period	
						\$m	\$m
TREND ESTIMATES							
2000							
September	2 698	-4.7	377.7	96.1	473.9	r 722.4	r -2.1
October	2 686	-0.4	383.3	91.9	475.1	r 727.9	r 0.8
November	2 743	2.1	r 397.3	90.3	r 487.6	r 749.7	r 3.0
December	r 2 829	3.2	r 415.8	90.5	506.5	r 784.2	r 4.6
2001							
January	2 906	2.7	430.5	92.3	522.8	r 821.3	r 4.7
February	r 2 942	1.2	r 434.1	94.6	r 528.7	r 853.8	r 4.0
March	r 2 981	1.3	r 436.8	r 96.8	r 533.6	r 890.9	r 4.3
April	r 3 105	4.2	r 453.4	r 101.1	r 554.5	r 926.1	r 4.0
May	r 3 367	r 8.4	r 492.3	r 108.2	r 600.5	r 962.3	r 3.9
June	r 3 715	r 10.4	r 545.8	r 115.4	r 661.3	r 996.3	r 3.5
July	r 4 032	r 8.5	r 595.5	r 120.4	r 716.0	r 1 021.3	r 2.5
August	r 4 233	r 5.0	r 628.0	r 122.0	r 750.1	r 1 035.7	r 1.4
September	4 309	1.8	641.8	120.5	762.3	1 047.3	1.1
October	4 299	-0.2	641.6	117.3	758.9	1 057.0	0.9
November	4 190	-2.5	628.8	111.0	739.8	1 055.5	-0.1

(a) Valued at \$10,000 and over.

(b) Includes alterations and additions creating dwellings, alterations and additions not creating dwellings, and conversions.

Source: *Building Approvals, Victoria* (Cat. no. 8731.2); ABS data available on request, *Building Approvals* collection.

Period	Number of new dwelling units(a)				Value of building approvals					
	All new dwelling units(b)				All building					
	Private sector	Public sector	Proportion of State total	New dwelling units(a)	Residential alterations, additions and conversions(c)	Non-residential building(d)	Proportion of State total			
no.	no.	no.	%	\$m	\$m	\$m	\$m	\$m	%	
MELBOURNE										
1998-99	r 28 632	r 661	r 29 293	r 76.9	r 3 601.8	800.3	2 642.3	r 7 044.4	r 81.6	
1999-2000	37 091	611	37 702	77.7	5 142.4	1 019.4	2 650.9	8 812.7	81.3	
2000-01	r 26 263	374	r 26 637	77.7	r 4 117.5	990.5	3 470.5	r 8 578.5	82.7	
2000										
September	1 921	32	1 953	r 77.2	276.9	57.1	216.2	550.2	77.3	
October	1 380	68	1 448	71.2	214.5	87.3	178.3	480.1	76.4	
November	2 302	15	2 317	r 77.8	356.5	82.8	237.9	677.2	81.9	
December	2 377	11	2 388	80.8	395.4	63.2	260.6	719.1	83.5	
2001										
January	1 983	51	2 034	79	315	59	226	600	83	
February	2 490	25	2 515	80	363	74	233	670	84	
March	2 582	19	2 601	80	436	107	435	978	85	
April	1 810	19	1 829	75	288	63	309	661	84	
May	r 2 763	15	r 2 778	r 75.6	r 422.2	97	451	r 970.5	83	
June	2 387	51	2 438	r 75.6	357	96	173	626	78	
July	2 672	138	2 810	76	419	93	215	726	77	
August	4 485	41	4 526	80	895	114	244	1 253	84	
September	2 969	56	3 025	76	458	114	198	770	81	
October	2 987	47	3 034	73	464	110	375	949	80	
November	2 555	74	2 629	70	397	83	321	800	78	
BALANCE OF VICTORIA										
1998-99	r 8 580	r 233	r 8 813	r 23.1	r 950.1	150.9	483.4	r 1 584.4	18.4	
1999-2000	10 641	176	10 817	22.3	1 275.6	191.6	560.9	2 028.1	18.7	
2000-01	7 550	91	7 645	22.3	998.7	200.4	590.1	1 789.3	17.3	
2000										
September	578	—	578	r 22.8	69.2	15.8	76.7	r 161.8	22.7	
October	583	3	586	28.8	76.8	20.7	50.4	147.9	23.6	
November	662	—	662	r 22.2	82.0	15.0	52.4	149.5	18.1	
December	562	5	567	19.2	74.7	16.2	51.1	142.0	16.5	
2001										
January	531	7	538	20.9	72.1	14.2	41.1	127.4	17.5	
February	642	3	645	20.4	87.1	15.6	25.1	127.7	16.0	
March	655	4	659	20.2	92.3	19.4	66.9	178.6	15.4	
April	595	5	600	24.7	77.7	15.5	37.6	130.7	16.5	
May	875	21	896	r 24.4	115.7	19.6	66.1	201.4	r 17.2	
June	772	14	786	24.3	109.0	21.5	43.2	173.7	21.7	
July	875	32	907	24.4	125.3	16.0	74.3	215.6	22.9	
August	1 093	27	1 120	19.8	154.7	22.6	54.5	231.8	15.6	
September	923	14	937	23.6	127.6	16.8	37.6	182.0	19.1	
October	1 104	23	1 127	27.1	154.4	20.3	60.5	235.2	19.9	
November	1 104	9	1 113	29.7	150.5	18.9	50.8	220.2	21.6	

For footnotes see end of table.

...continued

Period	Number of new dwelling units(a)				Value of building approvals				
	All new dwelling units(b)				All building				
	Private sector	Public sector	Proportion of State total		New dwelling units(a)	Residential alterations, additions and conversions(c)	Non-residential building(d)	Proportion of State total	
no.	no.	no.	%	\$m	\$m	\$m	\$m	%	
VICTORIA									
1998–99	37 212	894	38 106	100	4 551.9	951.2	3 125.7	8 628.8	100
1999–2000	47 732	787	48 519	100	6 418.0	1 211.0	3 211.8	10 840.8	100
2000–01	33 779	465	34 244	100	5 110.2	1 190.9	4 060.6	10 361.8	100
2000									
September	2 499	32	2 531	100	346.1	73.0	292.9	712.0	100
October	1 963	71	2 034	100	291.3	108.0	228.7	628.1	100
November	2 964	15	2 979	100	438.5	97.8	290.4	826.7	100
December	2 939	16	2 955	100	470.0	79.4	311.6	861.1	100
2001									
January	2 514	58	2 572	100	387.3	73.2	266.8	727.3	100
February	3 132	28	3 160	100	450.3	89.4	257.8	797.6	100
March	3 237	23	3 260	100	528.5	126.1	501.5	1 156.2	100
April	2 408	24	2 429	100	365.6	78.8	346.9	791.2	100
May	3 638	36	3 674	100	538.0	116.7	517.2	1 171.9	100
June	3 159	65	3 224	100	465.5	117.7	216.4	799.6	100
July	3 547	170	3 717	100	544.0	108.8	289.2	942.0	100
August	5 578	68	5 646	100	1 049.2	136.9	298.9	1 485.0	100
September	3 892	70	3 962	100	585.9	130.5	235.2	951.6	100
October	4 091	70	4 161	100	618.4	130.5	435.7	1 184.6	100
November	3 659	83	3 742	100	546.9	101.5	371.6	1 020.0	100

(a) Valued at \$10,000 and over.

(b) Excludes dwelling units created as a result of conversions or construction of non-residential buildings.

(c) Includes alterations and additions creating dwellings, alterations and additions not creating dwellings, and conversions.

(d) Valued at \$50,000 and over.

Source: *Building Approvals, Victoria (Cat. no. 8731.2)*.

Local Government Area	September quarter 2001			12 months ending September 2001			
	Number of dwelling units(a)	Number of building jobs	Value of all approvals	Number of dwelling units(a)	Number of building jobs	Value of all approvals	Number of dwelling units per '000 population
	no.	no.	\$m	no.	no.	\$m	
Alpine (S)	24	44	4.0	106	193	23.8	8.4
Ararat (RC)	9	22	1.6	33	78	11.0	2.9
Ballarat (C)	210	307	45.7	578	1 025	169.5	7.0
Banyule (C)	162	261	43.6	504	804	134.2	4.2
Bass Coast (S)	209	292	28.7	670	914	95.5	28.9
Baw Baw (S)	79	113	14.7	245	398	48.4	6.9
Bayside (C)	145	327	73.1	711	1 225	270.1	7.8
Boroondara (C)	170	456	93.4	602	1 522	349.6	3.8
Brimbank (C)	709	663	107.6	1 567	1 625	281.1	9.5
Buloke (S)	1	10	1.6	3	25	3.8	0.4
Campaspe (S)	62	104	13.6	209	372	56.4	5.9
Cardinia (S)	198	245	37.8	593	825	104.6	12.9
Casey (C)	1 018	1 169	166.3	2 984	3 755	509.4	17.1
Central Goldfields (S)	10	29	2.0	33	82	6.6	2.6
Colac-Otway (S)	34	61	6.3	151	245	46.9	7.5
Corangamite (S)	147	214	48.5	176	331	62.3	10.3
Darebin (C)	173	285	49.2	567	1 025	163.9	4.4
Delatite (S)	43	70	7.2	125	230	28.5	6.2
East Gippsland (S)	99	142	14.9	270	452	48.8	6.9
Frankston (C)	337	373	50.5	945	1 162	174.1	8.3
Gannawarra (S)	6	23	1.8	22	88	8.1	1.9
Glen Eira (C)	224	292	65.7	631	1 080	190.2	5.1
Glenelg (S)	21	49	9.9	46	160	24.5	2.3
Golden Plains (S)	38	57	5.6	108	177	17.7	7.5
Greater Bendigo (C)	209	300	38.2	595	1 047	132.9	6.8
Greater Dandenong (C)	88	154	30.3	356	683	134.7	2.7
Greater Geelong (C)	559	746	104.7	1 706	2 535	333.6	8.9
Greater Shepparton (C)	127	181	24.5	363	669	86.3	6.4
Hepburn (S)	28	62	9.2	93	202	24.5	6.6
Hindmarsh (S)	2	10	2.9	9	35	8.5	1.4
Hobsons Bay (C)	217	265	51.7	568	831	148.8	6.8
Horsham (RC)	39	53	8.4	105	236	28.2	5.8
Hume (C)	522	619	107.1	1 491	1 949	362.2	11.2
Indigo (S)	22	46	4.7	88	171	17.6	6.1
Kingston (C)	316	413	84.7	938	1 338	247.3	6.9
Knox (C)	477	452	85.5	1 116	1 443	345.2	7.6
Latrobe (C)	59	125	14.7	189	503	47.6	2.7
Loddon (S)	6	16	1.0	15	57	5.0	1.7
Macedon Ranges (S)	95	157	19.8	276	507	65.2	7.6
Manningham (C)	109	180	39.9	523	688	146.8	4.6
Maribymong (C)	127	208	37.5	547	699	145.1	8.9
Maroondah (C)	187	285	43.6	580	966	208.3	5.8
Melbourne (C)	1 619	326	574.9	3 353	1 164	1 572.0	64.4
Melton (S)	616	637	109.5	1 769	1 896	291.6	35.1
Mildura (RC)	113	173	24.2	391	577	77.5	8.1
Mitchell (S)	100	138	19.2	275	430	53.8	10.1
Moira (S)	34	69	13.3	122	260	30.6	4.6
Monash (C)	219	383	76.2	854	1 362	320.1	5.2
Moonee Valley (C)	124	270	43.9	438	900	151.2	3.9
Moorabool (S)	64	93	10.0	182	300	33.9	7.5
Moreland (C)	284	334	58.9	763	1 046	151.4	5.6
Mornington Peninsula (S)	626	907	131.4	1 829	2 856	398.3	14.4
Mount Alexander (S)	20	36	3.2	88	163	21.2	5.3
Moyne (S)	11	28	3.0	44	128	24.5	2.8
Murrindindi (S)	20	42	3.8	113	193	20.2	8.7
Nillumbik (S)	80	169	27.6	231	536	74.5	3.8
Northern Grampians (S)	3	19	1.1	44	97	9.0	3.4
Port Phillip (C)	102	216	85.7	1 770	773	502.0	21.7
Pyrenees (S)	5	15	1.6	17	49	4.7	2.6

For footnotes see end of table.

...continued

<i>Local Government Area</i>	<i>September quarter 2001</i>			<i>12 months ending September 2001</i>			
	<i>Number of dwelling units(a)</i>	<i>Number of building jobs</i>	<i>Value of all approvals</i>	<i>Number of dwelling units(a)</i>	<i>Number of building jobs</i>	<i>Value of all approvals</i>	<i>Number of dwelling units per '000 population</i>
	<i>no.</i>	<i>no.</i>	<i>\$m</i>	<i>no.</i>	<i>no.</i>	<i>\$m</i>	
Queenscliffe (B)	9	22	2.5	31	69	11.1	9.1
South Gippsland (S)	60	103	12.1	191	346	40.1	7.5
Southern Grampians (S)	6	35	3.2	40	161	15.7	2.4
Stonnington (C)	233	289	127.5	664	1 096	473.6	7.2
Strathbogie (S)	10	22	3.8	44	85	9.9	4.7
Surf Coast (S)	136	181	27.6	395	553	81.0	19.8
Swan Hill (RC)	28	52	10.6	99	219	26.4	4.8
Towong (S)	3	13	0.9	8	34	2.3	1.3
Wangaratta (RC)	36	71	15.4	103	228	34.3	4.0
Warrnambool (C)	30	56	7.0	129	258	27.1	4.5
Wellington (S)	56	91	9.2	158	330	28.5	3.9
West Wimmera (S)	0	5	0.2	4	20	1.1	0.8
Whitehorse (C)	163	339	49.6	572	1 148	212.9	3.9
Whittlesea (C)	297	374	58.6	1 206	1 360	212.0	10.4
Wodonga (RC)	87	129	22.4	251	451	52.2	7.9
Wyndham (C)	654	721	128.2	1 656	1 956	327.4	19.2
Yarra (C)	217	197	57.7	491	734	346.6	7.1
Yarra Ranges (S)	279	418	52.3	798	1 358	180.7	5.6
Yarriambiack (S)	4	9	0.9	7	24	1.8	0.8
Unincorporated Vic	1	1	0.2	1	2	0.2	14.3
Victoria	13 666	16 863	3 378.6	40 568	55 514	11 138.2	8.5

(a) Valued at \$10,000 and over. Excludes dwelling units created as a result of conversions or construction of non-residential buildings.

Source: ABS data available on request, *Building Approvals*.

Period	New residential building			Non-residential building			
	Houses	Other residential building	Total	Alterations and additions to residential buildings	Private sector	Total	Total building
	\$m	\$m	\$m	\$m	\$m	\$m	\$m
WORK COMMENCED — ORIGINAL							
1998–99	3 753.5	1 069.3	4 823.5	1 065.8	2 217.1	3 183.5	9 085.3
1999–2000	4 700.0	1 661.6	6 361.5	1 295.7	2 453.9	3 263.1	10 920.3
2000–01	3 174.7	1 566.4	4 741.1	996.1	2 960.6	3 662.0	9 399.3
2000							
March	1 195.5	438.1	1 633.5	322.6	620.2	800.9	2 756.5
June	1 175.1	379.4	1 554.6	370.6	697.5	1 068.1	2 996.5
September	807.8	397.4	1 205.2	237.2	696.4	800.1	2 242.5
December	769.5	256.3	1 025.8	265.2	621.2	770.6	2 061.6
2001							
March	731.3	451.8	1 183.1	208.4	662.3	913.2	2 304.8
June	866.1	460.9	1 327.0	285.3	980.7	1 178.1	2 790.4
WORK DONE — ORIGINAL							
1998–99	3 609.3	996.9	4 604.7	1 070.7	2 834.6	3 685.7	9 382.8
1999–2000	4 468.4	1 351.6	5 819.9	1 269.3	2 666.6	3 430.7	10 520.0
2000–01	3 424.7	1 331.0	4 755.9	1 048.0	2 597.9	3 438.9	9 242.8
2000							
March	1 035.0	315.4	1 350.4	291.9	573.8	730.9	2 371.6
June	1 332.1	414.3	1 746.6	387.0	683.8	901.0	3 032.2
September	925.5	347.8	1 273.4	229.1	638.9	839.4	2 341.8
December	828.0	321.0	1 149.0	275.0	664.7	870.5	2 294.5
2001							
March	801.6	302.4	1 104.1	250.8	601.3	811.9	2 166.8
June	869.6	359.8	1 229.4	293.1	693.0	917.1	2 439.7
WORK DONE — SEASONALLY ADJUSTED							
2000							
March	1 119.5	350.7	1 472.2	321.1	643.6	812.0	2 586.2
June	1 332.6	404.2	1 721.7	369.6	679.4	896.7	3 010.2
September	911.0	316.2	1 227.2	240.5	628.5	830.5	2 298.2
December	775.3	327.6	1 102.9	252.1	609.1	800.0	2 155.0
2001							
March	867.6	336.9	1 204.4	275.6	672.8	898.8	2 378.8
June	870.9	350.4	1 221.3	279.9	687.6	909.7	2 410.9

(a) Reference year for chain volume measures is 1999–2000. See paragraphs 28 to 31 of the Explanatory Notes in Building Activity, Victoria (Cat. no. 8752.2).

Source: Building Activity, Victoria (Cat. no. 8752.2).

Local Government Area	Value of building commenced \$'000	Value of building under construction at end of quarter \$'000	Value of building completed \$'000	Value of work yet to be done at end of quarter \$'000	Value of work done \$'000
Alpine (S)	984	5 953	4 872	3 321	2 383
Ararat (RC)	482	797	—	611	28
Ballarat (C)	36 103	66 794	8 485	34 051	21 325
Banyule (C)	11 514	38 080	17 355	15 846	15 608
Bass Coast (S)	5 705	13 263	3 196	5 295	6 288
Baw Baw (S)	1 302	5 682	1 978	2 389	2 224
Bayside (C)	28 449	63 606	24 381	41 651	19 000
Boroondara (C)	71 459	146 194	35 980	85 427	42 859
Brimbank (C)	45 370	143 959	27 447	47 861	45 462
Buloke (S)	919	870	50	330	589
Campaspe (S)	14 576	15 551	4 454	13 718	3 136
Cardinia (S)	3 409	4 646	3 845	2 069	3 735
Casey (C)	32 346	192 922	40 452	65 839	34 954
Central Goldfields (S)	29	1 990	99	408	672
Colac-Otway (S)	8 249	23 653	7 201	14 276	7 090
Corangamite (S)	2 505	6 104	728	3 126	2 232
Darebin (C)	15 113	65 852	11 154	28 199	22 802
Delatite (S)	3 421	8 695	2 535	2 288	5 068
East Gippsland (S)	2 036	4 624	1 386	1 123	2 107
Frankston (C)	13 254	35 901	17 818	24 392	12 681
Gannawarra (S)	549	2 091	585	904	1 061
Glen Eira (C)	11 682	48 628	19 017	18 174	17 014
Glenelg (S)	2 918	7 458	1 306	3 320	3 841
Golden Plains (S)	—	1 200	30	539	596
Greater Bendigo (C)	16 074	18 321	9 223	12 145	7 733
Greater Dandenong (C)	33 683	60 014	45 191	25 361	31 401
Greater Geelong (C)	14 436	51 458	32 214	26 655	20 769
Greater Shepparton (C)	7 316	20 312	6 224	8 172	8 956
Hepburn (S)	7 059	7 275	184	5 978	1 283
Hindmarsh (S)	3 449	3 449	72	1 659	1 817
Hobsons Bay (C)	8 735	34 238	9 667	17 270	12 150
Horsham (RC)	1 659	7 128	5 237	1 781	2 678
Hume (C)	28 528	120 495	71 867	44 744	38 624
Indigo (S)	180	378	1 687	104	709
Kingston (C)	18 893	61 646	216 394	23 953	31 502
Knox (C)	113 323	159 105	12 724	119 380	27 789
Latrobe (C)	3 598	4 930	3 120	2 187	3 483
Loddon (S)	578	4 119	459	272	958
Macedon Ranges (S)	5 080	9 337	1 481	2 606	4 855
Manningham (C)	15 148	35 747	12 245	18 597	11 721
Maribyrnong (C)	37 279	83 393	27 699	37 816	29 743
Maroondah (C)	109 700	121 824	16 954	98 434	21 968
Melbourne (C)	363 738	2 255 606	342 955	1 228 111	370 364
Melton (S)	24 890	28 920	6 185	24 293	5 924
Mildura (RC)	9 967	12 268	7 023	9 352	4 678
Mitchell (S)	1 527	3 444	1 258	2 215	1 222
Moira (S)	895	417	24 344	201	6 108
Monash (C)	32 465	158 607	28 396	70 645	53 830
Moonee Valley (C)	16 973	56 875	20 301	30 450	17 180
Moorabool (S)	1 996	3 856	1 035	1 949	1 709
Moreland (C)	12 283	53 149	10 537	22 720	15 734
Mornington Peninsula (S)	39 879	55 515	14 333	26 828	21 720
Mount Alexander (S)	1 718	5 798	1 719	1 999	2 296
Moyne (S)	1 100	14 372	796	3 204	6 614
Murrindindi (S)	680	4 737	339	2 933	1 355
Nillumbik (S)	1 364	11 610	3 899	3 637	4 529
Northern Grampians (S)	707	1 423	2 390	637	1 273
Port Phillip (C)	161 339	662 811	69 936	372 186	116 982
Pyrenees (S)	707	1 552	193	681	571

...continued

Local Government Area	Value of building commenced \$'000	Value of building under construction at end of quarter \$'000	Value of building completed \$'000	Value of work yet to be done at end of quarter \$'000	Value of work done \$'000
Queenscliffe (B)	3 724	4 561	106	3 797	506
South Gippsland (S)	3 020	9 332	1 086	5 271	3 101
Southern Grampians (S)	930	2 476	2 263	1 424	815
Stonnington (C)	85 516	279 594	114 889	136 389	81 343
Strathbogie (S)	1 508	1 608	138	1 031	540
Surf Coast (S)	9 760	20 032	1 963	11 034	3 777
Swan Hill (RC)	697	376	2 944	90	967
Towong (S)	—	—	—	—	—
Wangaratta (RC)	1 662	19 394	4 932	8 513	4 825
Warrnambool (C)	1 112	3 174	5 531	1 370	2 014
Wellington (S)	3 218	2 261	1 295	939	2 416
West Wimmera (S)	99	—	2 098	—	198
Whitehorse (C)	37 398	100 930	46 625	66 337	31 839
Whittlesea (C)	18 500	63 662	37 445	18 324	25 994
Wodonga (RC)	1 317	22 801	1 437	10 751	4 257
Wyndham (C)	30 353	48 936	17 655	24 768	19 841
Yarra (C)	141 462	207 905	52 482	161 184	46 939
Yarra Ranges (S)	14 676	43 629	25 665	21 807	19 808
Yarriambiack (S)	239	303	—	66	218
Unincorporated Vic.	—	—	—	—	—
Victoria	1 764 507	5 869 610	1 561 188	3 137 406	1 412 382

Source: ABS data available on request, Building Activity.

36

NEW MOTOR VEHICLE REGISTRATIONS(a): ALL SERIES

Period	Original series							Seasonally adjusted Total (excl. motor-cycles) no.	Trend estimates Total (excl. motor-cycles) no.	Change from previous period %
				Total (excl. motorcycles)			Motor-cycles and scooters no.			
	Passenger vehicles no.	Light commercial vehicles no.	Trucks and buses no.	Melbourne no.	Other areas(b) no.	Victoria no.				
1998-99	177 754	23 015	5 694	159 715	46 748	206 463	8 601	206 411	206 454	7.8
1999-2000	164 544	25 233	5 769	150 803	44 743	195 546	9 613	196 357	195 223	-5.4
2000-01	189 822	23 600	5 606	172 694	46 334	219 028	10 205	220 932	217 837	11.6
2000										
August	17 394	1 987	497	15 795	4 083	19 878	849	18 682	18 105	1.1
September	15 037	1 718	442	13 692	3 505	17 197	889	18 105	18 520	2.3
October	16 243	1 896	490	14 972	3 657	18 629	1 001	18 870	18 910	2.1
November	17 408	1 901	550	15 816	4 043	19 859	974	18 548	19 106	1.0
December	18 508	1 993	441	16 703	4 239	20 942	904	21 186	19 026	-0.4
2001										
January	13 088	1 645	312	11 768	3 277	15 045	797	19 108	18 619	-2.1
February	13 683	1 851	406	12 377	3 563	15 940	712	16 646	r 18 056	-3.0
March	15 062	2 040	435	13 600	3 937	17 537	942	16 243	r 17 577	-2.7
April	13 550	1 834	420	12 298	3 506	15 804	782	18 577	r 17 277	-1.7
May	15 505	2 271	587	14 301	4 062	18 363	839	17 464	r 17 245	-0.2
June	15 619	2 682	496	14 190	4 607	18 797	745	15 899	r 17 417	1.0
July	16 826	2 232	509	15 323	4 244	19 567	718	19 329	r 17 593	1.0
August	15 567	2 223	486	14 259	4 017	18 276	958	17 067	17 693	0.6
September	13 397	1 973	452	12 537	3 285	15 822	802	17 476	17 778	0.5
October	15 904	2 293	555	14 738	4 014	18 752	958	18 187	17 778	0.0

(a) Excludes plant & equipment, caravans and trailers.

(b) Includes Balance of Victoria and out of State registrations.

Source: ABS data available on request, New Motor Vehicle Registrations.

Local Government Area	3 months ended								% change from 3 months ended Oct 2000 to 3 months ended Oct 2001
	1999- 2000	2000- 2001	Jul 2000	Oct 2000	Jan 2001	Apr 2001	Jul 2001	Oct 2001	
Alpine (S)	357	406	118	108	95	97	100	87	-19
Ararat (RC)	324	339	93	81	96	76	89	85	5
Ballarat (C)	2 739	3 028	750	702	761	781	832	754	7
Banyule (C)	3 537	4 010	930	997	1 049	900	1 032	856	-14
Bass Coast (S)	580	653	183	162	164	143	175	178	10
Baw Baw (S)	1 026	1 051	274	213	287	275	314	294	38
Bayside (C)	3 635	4 502	1 036	1 098	1 121	1 070	1 106	947	-14
Boroondara (C)	7 501	8 477	2 213	2 177	2 122	1 883	2 014	1 674	-23
Brimbank (C)	3 488	4 287	888	1 181	1 090	951	1 054	960	-19
Buloke (S)	279	269	66	58	73	88	57	43	-26
Campaspe (S)	1 118	1 246	298	295	299	297	358	283	-4
Cardinia (S)	1 343	1 410	346	387	349	297	418	321	-17
Casey (C)	4 650	5 655	1 240	1 453	1 362	1 368	1 420	1 270	-13
Central Goldfields (S)	313	329	85	95	84	80	82	79	-17
Colac-Otway (S)	575	635	164	163	162	155	168	148	-9
Corangamite (S)	482	492	142	112	120	117	149	166	48
Darebin (C)	3 271	6 317	994	1 458	1 492	1 603	2 313	2 777	90
Delatite (S)	660	622	207	141	153	135	197	157	11
East Gippsland (S)	1 248	1 229	355	281	322	281	369	289	3
Frankston (C)	3 206	3 624	879	866	899	878	931	848	-2
Gannawarra (S)	452	426	133	88	102	107	133	129	47
Glen Eira (C)	3 895	4 904	1 108	1 251	1 402	1 056	1 114	931	-26
Glenelg (S)	623	544	156	101	133	143	177	159	57
Golden Plains (S)	319	344	108	77	106	80	92	94	22
Greater Bendigo (C)	2 274	2 591	658	591	661	569	782	636	8
Greater Dandenong (C)	5 171	6 108	1 453	1 584	1 421	1 364	1 513	1 317	-17
Greater Geelong (C)	6 903	7 592	1 662	1 837	1 990	1 740	2 087	1 810	-1
Greater Shepparton (C)	1 871	2 122	505	536	491	501	581	539	1
Hepburn (S)	352	416	97	105	92	93	131	114	9
Hindmarsh (S)	217	210	45	42	50	67	61	55	31
Hobsons Bay (C)	2 261	2 587	597	685	633	587	662	586	-14
Horsham (RC)	668	638	179	138	136	190	191	176	28
Hume (C)	10 280	12 871	2 281	3 305	4 291	2 268	2 659	3 094	-6
Indigo (S)	388	422	101	115	102	107	108	94	-18
Kingston (C)	4 962	4 942	1 182	1 283	1 236	1 152	1 234	1 137	-11
Knox (C)	4 961	5 733	1 259	1 494	1 483	1 337	1 314	1 356	-9
Latrobe (C)	2 530	2 647	604	659	596	713	667	609	-8
Loddon (S)	249	226	69	36	55	67	80	63	75
Macedon Ranges (S)	1 103	1 202	281	281	285	321	345	329	17
Manningham (C)	4 206	5 450	1 123	1 329	1 357	1 363	1 365	1 174	-12
Maribymong (C)	2 067	2 865	504	601	667	776	957	1 003	67
Maroondah (C)	3 472	3 880	930	966	932	931	961	839	-13
Melbourne (C)	17 385	15 272	4 295	4 611	3 931	3 084	3 379	3 339	-28
Melton (S)	1 308	1 582	406	433	360	339	387	356	-18
Mildura (RC)	1 746	1 577	490	387	368	370	467	399	3
Mitchell (S)	841	853	212	219	210	204	243	197	-10
Moira (S)	725	799	218	181	191	189	248	165	-9
Monash (C)	8 619	10 586	2 497	2 661	2 836	2 213	2 475	2 332	-12
Moonee Valley (C)	3 250	4 028	887	963	1 004	970	1 045	949	-1
Moorabool (S)	655	745	163	209	184	160	223	201	-4
Moreland (C)	4 817	5 377	1 177	1 379	1 330	1 247	1 494	1 348	-2
Mornington Peninsula (S)	3 981	4 491	1 063	1 112	1 084	1 072	1 194	1 084	-3
Mount Alexander (S)	384	363	114	87	92	74	102	113	30
Moyne (S)	496	504	144	114	116	121	150	132	16
Murrindindi (S)	453	519	125	135	96	139	171	107	-21

For footnotes see end of table.

...continued

Local Government Area	3 months ended								% change from 3 months ended Oct 2000 to 3 months ended Oct 2001
	1999– 2000	2000– 2001	Jul 2000	Oct 2000	Jan 2001	Apr 2001	Jul 2001	Oct 2001	
Nillumbik (S)	1 823	1 934	488	493	466	452	506	438	-11
Northern Grampians (S)	355	398	97	83	101	102	108	95	14
Port Phillip (C)	16 832	17 248	5 265	4 711	4 297	3 310	4 607	4 429	-6
Pyrenees (S)	183	180	55	34	44	50	55	41	21
Queenscliffe (B)	119	119	39	27	26	29	36	34	26
South Gippsland (S)	823	805	178	141	153	152	182	183	30
Southern Grampians (S)	616	620	239	177	199	203	261	172	-3
Stonnington (C)	4 068	4 742	1 027	1 167	1 115	1 161	1 263	1 136	-3
Strathbogie (S)	305	299	81	61	83	74	94	69	13
Surf Coast (S)	680	731	170	176	202	156	217	183	4
Swan Hill (RC)	748	656	209	135	163	161	231	160	19
Towong (S)	199	205	60	45	54	39	64	40	-11
Wangarratta (RC)	951	908	270	234	228	210	241	197	-16
Warrnambool (C)	884	1 122	250	282	292	251	310	290	3
Wellington (S)	1 359	1 332	389	350	330	312	372	349	-0
West Wimmera (S)	180	165	43	29	43	55	52	37	28
Whitehorse (C)	5 558	6 118	1 380	1 529	1 556	1 417	1 562	1 398	-9
Whittlesea (C)	2 782	3 170	741	854	731	710	808	726	-15
Wodonga (RC)	1 254	1 349	352	333	341	340	337	302	-9
Wyndham (C)	2 535	3 298	710	844	838	703	918	843	-0
Yarra (C)	3 908	3 509	869	857	907	811	980	967	13
Yarra Ranges (S)	3 877	4 181	1 033	1 070	1 056	943	1 055	1 014	-5
Yarriambiack (S)	281	263	80	52	81	69	60	68	31
Out of State and Unincorporated Victoria(d)	1 943	1 677	489	399	416	380	437	500	25
Victoria	196 482	219 028	52 598	55 704	55 846	49 281	56 727	52 850	-5

(a) Excludes motorcycles, plant & equipment, caravans and trailers.

(b) Caution should be used in the interpretation of these figures, as the series was noticeably affected by the introduction of the New Tax System on 1 July 2000.

(c) Registrations are coded by postcode of owner. Totals for local government areas are then estimated based on the proportion of each postcode's population in each local government area.

(d) Includes registrations of vehicles within Victoria where the owner resides outside of Victoria, and registrations where the owner resides within Victoria, but not within the boundaries of any local government area.

Source: ABS data available on request, New Motor Vehicle Registrations.

Month	Food retailing \$m	Department stores \$m	Clothing and soft good retailing \$m	Household good retailing \$m	Recreational good retailing \$m	Other retailing \$m	Hospitality and services \$m	Total	
								\$m	Change from previous month %
ORIGINAL									
2000									
September	1 216.2	245.9	193.9	341.3	130.7	311.2	408.4	2 847.6	-0.2
October	1 253.7	264.7	202.4	353.7	124.5	354.3	418.4	2 971.6	4.4
November	1 296.2	302.9	240.8	385.8	136.9	375.1	425.2	3 163.0	6.4
December	1 515.4	543.4	350.2	481.6	207.5	504.7	480.6	4 083.3	29.1
2001									
January	1 309.7	240.0	212.4	366.5	141.2	312.4	428.0	3 010.1	-26.3
February	1 228.9	202.0	182.3	336.7	117.2	317.8	411.2	2 796.0	-7.1
March	1 365.9	261.7	228.7	361.7	130.3	341.8	475.0	3 165.1	13.2
April	1 299.1	259.1	227.7	358.2	119.8	333.6	456.3	3 053.8	-3.5
May	1 301.8	269.0	231.4	389.6	131.7	374.6	461.8	3 159.9	3.5
June	1 261.3	256.4	222.4	421.3	133.2	357.5	466.7	3 118.7	-1.3
July	1 284.7	270.6	216.2	417.7	134.3	387.1	488.0	3 198.5	2.6
August	1 338.9	227.1	205.2	425.7	138.3	395.3	492.6	3 223.1	0.8
September	1 292.6	245.8	208.3	419.3	131.1	378.9	459.2	3 135.1	-2.7
October	1 362.9	274.3	235.5	471.5	144.2	399.9	500.5	3 388.9	8.1
November	1 399.8	322.5	240.4	477.5	153.7	422.9	507.7	3 524.4	4.0
SEASONALLY ADJUSTED r									
2000									
September	1246.5	268.3	210.3	350.4	131.5	308.2	411.2	2926.3	-1.0
October	1254.6	275.9	210.1	347.6	128.6	343.9	416.0	2976.7	1.7
November	1265.3	267.9	224.1	367.6	128.5	351.1	422.5	3026.8	1.7
December	1290.8	279.7	237.0	362.9	132.8	350.5	417.8	3071.6	1.5
2001									
January	1302.6	280.7	226.0	359.9	138.7	356.5	431.1	3095.3	0.8
February	1324.6	283.5	232.2	373.3	133.8	377.9	448.8	3174.1	2.5
March	1333.7	288.4	239.7	384.6	136.5	353.2	460.8	3196.9	0.7
April	1355.2	279.1	229.8	390.5	137.8	357.2	462.2	3211.8	0.5
May	1326.6	276.1	220.9	401.9	144.3	390.7	470.4	3230.8	0.6
June	1328.1	287.3	228.0	442.8	143.9	382.1	487.4	3299.6	2.1
July	1327.7	288.2	226.6	434.8	147.1	398.4	496.0	3318.8	0.6
August	1330.9	271.6	224.7	437.5	143.9	393.2	489.1	3290.8	-0.8
September	1349.7	273.1	228.3	437.3	135.4	387.5	477.0	3288.4	-0.1
October	1347.8	283.1	236.0	459.3	145.4	384.2	494.5	3350.4	1.9
November	1358.0	282.4	228.7	453.5	146.9	385.9	493.1	3348.6	-0.1
TREND ESTIMATES r									
2000									
September	1 249.5	271.7	211.9	352.8	129.8	329.9	414.9	2 957.2	0.7
October	1 259.7	272.6	215.7	354.7	130.5	338.6	416.1	2 985.3	1.0
November	1 272.7	275.0	221.5	357.6	131.3	347.4	419.5	3 022.2	1.2
December	1 288.5	277.7	227.5	361.7	132.4	355.1	425.5	3 065.1	1.4
2001									
January	1 305.6	279.9	231.5	366.7	134.0	361.3	433.9	3 108.9	1.4
February	1 321.1	281.9	233.0	373.4	135.8	366.4	444.1	3 151.5	1.4
March	1 331.2	283.3	232.3	381.9	138.1	371.2	455.6	3 190.7	1.2
April	1 335.4	283.5	230.1	392.1	140.3	376.6	466.5	3 224.3	1.1
May	1 335.4	282.7	227.9	403.6	141.9	382.0	475.7	3 252.5	0.9
June	1 333.9	281.3	226.6	415.4	143.0	386.2	482.1	3 274.3	0.7
July	1 333.9	280.2	226.5	426.2	143.4	388.9	485.8	3 291.4	0.5
August	1 336.8	279.5	227.4	435.9	143.4	390.2	488.3	3 306.3	0.5
September	1 341.8	279.1	228.7	444.4	143.4	390.0	489.9	3 319.7	0.4
October	1 347.0	279.2	230.1	451.4	143.5	389.1	491.2	3 331.7	0.4
November	1 353.4	279.5	231.4	456.6	143.6	386.5	491.7	3 340.9	0.3

(a) Excludes motor vehicles, parts, petrol, etc.

Source: Retail Trade, Australia (Cat. no. 8501.0).

Quarter ended	Original		Seasonally adjusted <i>r</i>		Trend estimates <i>r</i>	
	Victoria	Australia	Victoria	Australia	Victoria	Australia
TURNOVER (\$m)						
2000						
June	8 579.5	35 834.9	8 987.2	37 446.7	8 708.8	36 552.9
September	8 156.7	35 189.0	8 437.7	36 167.8	8 648.8	36 568.6
December	9 870.9	40 987.8	8 757.8	36 734.8	8 759.2	36 826.6
2001						
March	8 533.0	35 482.3	8 995.6	37 312.4	8 966.4	37 245.7
June	8 817.5	36 243.4	9 186.9	37 687.6	9 165.2	37 736.7
September	8 992.8	37 217.1	9 300.0	38 281.3	9 310.4	38 220.4
PERCENTAGE CHANGE (FROM PREVIOUS QUARTER)						
2000						
June	2.1	3.0	1.7	2.6	-2.0	-0.5
September	-4.9	-1.8	-6.1	-3.4	-0.7	0.0
December	21.0	16.5	3.8	1.6	1.3	0.7
2001						
March	-13.6	-13.4	2.7	1.6	2.4	1.1
June	3.3	2.1	2.1	1.0	2.2	1.3
September	2.0	2.7	1.2	1.6	1.6	1.3
PERCENTAGE CHANGE (FROM SAME QUARTER OF PREVIOUS YEAR)						
2000						
June	2.7	4.3	2.6	4.2	-0.7	1.4
September	-6.6	-1.1	-6.6	-1.1	-3.8	-0.1
December	-3.6	-0.9	-3.7	-0.9	-3.0	0.1
2001						
March	1.6	1.9	1.8	2.2	0.9	1.4
June	2.8	1.1	2.2	0.6	5.2	3.2
September	10.3	5.8	10.2	5.8	7.6	4.5

(a) Excludes motor vehicles, parts, petrol, etc.

(b) Reference year for chain volume measures is 1999-2000.

Source: Retail Trade, Australia (Cat. no. 8501.0).

40

TOURIST ACCOMMODATION

Quarter ended	Hotels, motels, guest houses and serviced apartments(a)							
	Establishments	Guest rooms	Bed spaces	Persons employed	Room nights occupied	Room occupancy rate	Guest nights occupied	Takings from accommodation
	no.	no.	no.	no.	'000	%	'000	\$m
1999								
December	705	31 317	86 058	21 633	1 672.7	58.1	2 772.6	191.6
2000								
March	707	31 332	86 134	21 498	1 773.4	62.3	2 982.4	213.0
June	705	31 384	86 372	21 586	1 628.9	57.1	2 655.9	185.3
September	703	31 158	85 719	21 784	1 608.7	56.2	2 663.8	207.4
December	701	31 155	85 238	21 700	1 698.9	59.4	2 838.7	217.3
2001								
March	706	32 023	87 185	21 890	1 787.2	62.1	3 054.5	241.4
June	705	32 295	87 866	22 008	1 619.6	55.1	2 699.3	202.6
September	707	32 274	87 398	22 011	1 649.2	55.5	2 797.1	214.1

(a) Comprising establishments with 15 or more rooms or units.

Source: Tourist Accommodation, Australia (Cat. no. 8635.0).

41

TOURIST ACCOMMODATION, BY TOURISM REGION—SEPTEMBER QUARTER 2001

Tourism Region	Hotels, motels, guest houses and serviced apartments(a)				
	Room occupancy rate	Guest nights	Guest arrivals	Average length of stay	Takings from accommodation
	%	'000.	'000.	days	\$'000
Melbourne	66.2	1 867.6	812.7	2.3	164 595
Melbourne East	35.4	17.3	12.0	1.4	1 427
Peninsula	33.7	38.5	22.4	1.7	2 720
Geelong	44.1	50.5	27.9	1.8	3 246
Western	44.2	110.2	71.8	1.5	5 321
Western Grampians	43.8	30.7	23.4	1.3	1 641
Central Highlands	35.4	21.4	13.2	1.6	852
Ballarat	43.5	72.7	43.2	1.7	3 154
Macedon	32.0	2.5	1.6	1.6	245
Spa Country	58.7	9.8	6.8	1.5	861
Bendigo Loddon	52.5	64.0	42.6	1.5	3 204
Wimmera	37.8	6.3	4.4	1.4	239
Mallee	45.7	86.2	54.0	1.6	3 812
Central Murray	38.9	34.8	23.1	1.5	1 492
Goulburn	47.8	47.8	33.1	1.4	2 347
Upper Yarra	28.4	17.3	10.2	1.7	1 395
High Country	41.1	201.0	87.7	2.3	12 511
Murray East	37.2	18.0	12.5	1.4	732
Lakes	27.4	29.6	21.2	1.4	1 227
Gippsland	34.0	46.3	28.9	1.6	2 278
Phillip Island	26.9	24.7	14.0	1.8	843
Total Victoria	55.5	2 797.1	1 366.5	2.0	214 141

(a) Comprising establishments with 15 or more rooms or units.

Source: Tourist Accommodation, Small Area Data, Victoria (Cat. no. 8635.2.40.001).

Period	Livestock slaughterings					Meat (carcass weight)				
	Cattle	Calves	Sheep	Lambs	Pigs	Beef	Veal	Mutton	Lamb	Pigmeat
	'000	'000	'000	'000	'000	tonnes	tonnes	tonnes	tonnes	tonnes
ORIGINAL										
1998-99	1 751.3	714.4	3 079.6	6 699.4	1 572.8	398 815	14 225	61 646	128 380	114 582
1999-2000	1 523.8	678.5	3 816.0	7 144.5	1 443.7	351 273	13 370	76 719	140 215	106 690
2000-01	1 492.8	608.9	4 089.8	7 965.7	1 065.6	347 920	11 842	81 965	155 540	78 954
2000										
September	114.5	111.8	288.5	624.8	80.1	26 829	2 268	5 989	12 304	6 047
October	129.5	51.9	347.2	735.5	84.2	31 100	991	7 414	14 161	6 174
November	135.4	13.8	370.7	765.0	90.4	32 630	281	7 827	14 895	6 735
December	121.0	5.7	282.0	632.7	86.8	27 544	131	5 931	12 171	6 758
2001										
January	134.4	6.0	382.4	675.9	84.7	31 525	138	7 673	13 000	6 260
February	135.6	5.2	406.4	654.8	83.6	31 995	115	7 755	12 925	5 975
March	131.8	14.0	418.6	672.1	90.5	30 517	283	7 699	13 056	6 499
April	110.1	19.4	307.0	592.3	87.3	24 948	378	5 761	11 309	6 424
May	136.9	46.8	397.8	705.8	95.9	31 783	900	7 597	13 912	6 846
June	107.3	61.7	312.2	582.6	84.8	24 515	1 184	5 973	11 419	6 284
July	111.2	77.8	r 307.6	r 537.7	88.6	r 26 311	1 476	r 6 010	r 10 375	6 694
August	112.8	165.1	265.1	582.5	95.9	26 941	3 169	5 243	11 401	r 6 838
September	100.8	104.4	250.1	521.0	82.5	24 264	1 999	5 027	10 069	6 093
October	128.2	52.4	368.2	641.4	94.2	30 885	1 006	7 395	12 344	6 725
November	126.9	18.3	379.7	670.3	93.5	30 804	440	7 634	12 855	6 448
SEASONALLY ADJUSTED										
2000										
September	131.3	47.7	339.2	613.5	85.5	31 107	951	6 837	12 202	6 351
October	128.3	46.8	314.8	685.6	87.8	30 457	917	6 310	13 236	6 335
November	124.3	35.4	313.6	665.6	90.8	29 382	655	6 383	12 895	6 787
December	127.0	41.3	280.9	656.4	88.2	28 502	762	5 908	12 771	7 057
2001										
January	123.6	43.9	328.2	666.1	89.2	28 389	772	6 514	12 701	6 658
February	126.4	44.4	335.1	683.0	91.7	29 234	779	6 546	13 388	6 707
March	124.6	48.6	355.4	679.5	88.3	28 723	884	6 844	13 235	6 412
April	122.8	44.5	345.8	664.8	87.4	27 974	837	6 688	13 020	6 409
May	121.4	48.6	396.6	667.8	83.5	28 545	946	7 982	12 939	5 931
June	115.8	49.8	400.9	650.3	84.5	27 270	983	7 739	12 801	6 162
July r	117.8	47.3	389.3	550.8	84.5	28 335	960	7 466	10 398	6 322
August	118.2	51.7	315.9	581.2	93.6	28 771	1 005	6 280	11 480	r 6 603
September	120.4	44.7	307.7	520.9	89.6	29 524	841	5 994	10 046	6 586
October	122.9	46.6	320.3	572.9	95.0	29 004	907	5 947	11 096	6 659
November	116.3	47.8	322.8	598.3	95.8	27 571	1 055	6 346	11 495	6 580
TREND ESTIMATES										
2000										
September	128.8	47.8	337.0	667.4	90.5	30 406	936	6 989	13 118	6 772
October	128.0	44.7	323.7	663.9	89.1	30 096	861	6 678	12 966	6 690
November	127.1	42.5	313.6	663.0	88.8	29 646	798	6 400	12 881	6 689
December	126.4	41.7	310.7	666.1	89.1	29 220	763	6 257	12 902	6 711
2001										
January	125.6	42.4	316.8	672.6	89.3	r 28 848	761	r 6 306	12 985	6 688
February	124.6	43.9	332.3	677.3	88.9	28 556	789	r 6 555	13 083	r 6 600
March r	123.6	45.8	352.6	676.9	87.9	28 376	838	6 910	13 171	6 460
April r	122.0	47.3	370.0	667.1	86.6	28 239	889	7 222	13 145	6 307
May r	120.4	48.2	378.6	647.6	85.8	28 196	926	7 380	12 945	6 226
June r	119.2	48.5	375.4	620.9	86.0	28 253	944	7 320	12 557	6 245
July r	118.7	48.4	363.2	595.0	87.3	28 396	949	7 074	12 079	6 331
August r	118.8	48.1	347.2	575.7	89.3	28 570	949	6 740	11 627	6 441
September	119.0	47.8	331.4	564.1	91.5	28 678	950	6 411	11 254	6 542
October	119.3	47.4	318.6	559.0	93.6	28 700	955	6 143	10 981	6 620
November	119.5	46.9	306.9	558.4	95.4	28 634	958	5 894	10 804	6 693

Source: ABS data available on request, Monthly Livestock Collection.

	Units	Jun qtr 2000	Sep qtr 2000	Dec qtr 2000	Mar qtr 2001	Jun qtr 2001	Sep qtr 2001
Livestock products							
Milk r							
Factory intake	million litres	1 030.9	1 669.0	2 465.1	1 553.1	1 089.9	1 688.4
Market sales by factories(b)	million litres	109.5	115.5	112.2	112.5	115.4	117.6
Milk products							
Cheese r	tonnes	49 833	48 619	75 087	64 902	56 524	65 922
Whole milk powder	tonnes	21 024	51 408	74 246	48 942	27 588	n.y.a.
Skim milk/buttermilk powder	tonnes	30 912	65 309	r 100 576	48 964	r 38 615	57 619
Butter/butteroil	tonnes	22 964	32 158	50 350	r 32 673	r 24 845	31 792
Wool receivals							
Original	tonnes	29 196	38 369	53 391	32 811	r 23 763	36 436
Seasonally adjusted r	tonnes	45 086	35 776	35 265	42 292	37 405	34 038
Trend(c) r	tonnes	37 692	37 358	37 827	38 422	37 827	36 014
Live sheep exports							
Quantity	number	91 267	—	220 658	353 767	r 328 409	195 721
Gross weight	tonnes	4 727	—	11 724	19 172	r 16 127	9 766
Chickens slaughtered							
Original r	'000	26 782.1	26 285.8	26 591.2	26 067.6	25 135.4	24 681.4
Seasonally adjusted r	'000	27 082.3	26 966.0	25 818.7	26 075.4	25 441.9	25 251.5
Trend r	'000	26 859.1	26 676.4	26 288.8	25 831.2	25 524.7	25 310.0
Chicken meat							
Original r	tonnes	43 838	42 735	46 915	42 335	43 788	41 170
Seasonally adjusted r	tonnes	44 537	43 657	45 098	42 469	44 517	42 037
Trend r	tonnes	43 949	44 219	44 168	43 762	43 292	42 656
Other products							
Electricity(d)	'000 megawatt hours	11 306	10 405	11 117	11 776	11 756	11 978
Ready mixed concrete(e)(f)	'000 cubic metres	1 127	1 029	1 016	959	1 102	n.y.a.
Hardwood woodchips(e)(g)	'000 tonnes	59 672	44 063	48 952	29 416	44 594	n.y.a.

(a) Quarterly statistics on Victoria's production of gold, oil and gas are available in Australian Mineral Statistics, published by the Australian Bureau of Agricultural and Resource Economics.

(b) Original series.

(c) Trend estimates for the most recent quarters are subject to revision when data for the subsequent quarters become available.

(d) Total metered generation of all generators in Victoria.

(e) Compiled from the ABS manufacturing production collection. Excludes details relating to both single establishment manufacturing enterprises with fewer than four persons employed, and establishments predominantly engaged in non-manufacturing activities which may also undertake some limited manufacturing activity. However, the effect of these establishments on production levels and movements is usually marginal.

(f) ANZSCC 375.01.01. Reported production of ready mixed concrete for sale as such. Excludes production used, or for use, in the same business. (An improvement in coverage for Melbourne Statistical Division from June month 2000 contributed approximately a 4% increase in the June month 2000 production level for Victoria).

(g) ANZSCC 312.03.01. Expressed as greenweight; excludes chips which are not sold or are used in own works.

Source: Australian Dairy Corporation; ABS data available on request, Livestock Products; National Electricity Market Management Company; ABS data available on request, Manufacturing Production.

44

INTERNATIONAL MERCHANDISE TRADE(a), BY COMMODITY(b)(c)

Section and Division of the SITC Rev3	1999–2000		2000–2001		Five months ended November 2001	
	Exports	Imports	Exports	Imports	Exports	Imports
	\$m	\$m	\$m	\$m	\$m	\$m
0 Food and live animals chiefly for food(d)(e)	4 426	1 357	5 772	1 430	2 781	642
1 Beverages and tobacco(d)(e)	187	141	228	211	109	110
2 Crude materials, inedible (except fuels)(d)(e)	1 580	625	r 2 164	677	829	269
3 Mineral fuels, lubricants, and related materials(e)	1 221	1 764	r 1 393	2 309	576	870
4 Animal and vegetable oils, fats and waxes(d)(e)	113	93	108	96	42	42
5 Chemicals and related products, n.e.c.(d)(e)	1 024	3 352	1 258	r 3 855	596	1 642
6 Manufacturing goods classified chiefly by material(d)(e)	2 681	4 648	r 2 901	4 773	1 197	2 160
7 Machinery and transport equipment(d)(e)	3 963	14 768	r 4 079	15 435	1 783	6 894
8 Miscellaneous manufactured articles(d)(e)	1 162	5 835	1 403	6 205	589	2 922
9 Commodities and transactions of merchandise trade, n.e.c.(f)						
97 Gold, non-monetary (excluding gold ores and concentrates)	1 965	203	1 940	335	570	110
98 Combined confidential items of trade	446	920	1 017	1 152	423	535
Other Section 9	265	9	242	8	115	7
Total Section 9	2 677	1 133	3 200	1 494	1 108	652
Total	19 034	33 717	r 22 506	r 36 485	9 609	16 203

(a) Victorian imports are those imported goods released from Customs control within Victoria. Victorian exports are those whose final stage of production or manufacture occurred within Victoria.

(b) Standard International Trade Classification.

(c) Any discrepancies between sums of the component items and totals are due to rounding.

(d) Excludes export commodities subject to a confidentiality restriction. These are included in Section 9.

(e) Excludes imports commodities subject to a confidentiality restriction. These are included in Section 9.

(f) Includes export and import commodities subject to a confidentiality restriction.

Source: ABS data available on request, International Merchandise Trade collection.

45

BALANCE OF INTERNATIONAL MERCHANDISE TRADE

Period	Victoria(a)			Australia			Victorian exports as a proportion of Australia	Victorian imports as a proportion of Australia
	Exports	Imports	Excess of exports	Exports (including re-exports)	Imports	Excess of exports		
	\$m	\$m	\$m	\$m	\$m	\$m		
1998–99	16 484	31 014	-14 530	85 991	97 611	-11 620	19.2	31.8
1999–2000	19 034	33 717	-14 683	97 286	110 078	-12 792	19.6	30.6
2000–01 r	22 506	36 485	-13 979	119 539	118 318	1 221	18.8	30.8
2000								
September	1 852	3 041	-1 189	9 779	9 852	-73	18.9	30.9
October	2 205	3 442	-1 237	10 551	11 154	-603	20.9	30.9
November	1 949	3 443	-1 494	10 431	11 006	-575	18.7	31.3
December	1 836	2 819	r -984	10 294	9 250	1 044	17.8	30.5
2001								
January	1 485	2 882	-1 397	8 327	r 9 267	r -940	17.8	r 31.1
February	1 903	2 711	-808	9 223	8 322	901	20.6	32.6
March r	2 073	3 074	-1 001	10 571	9 930	641	19.6	31.0
April	1 835	r 2 954	-1 120	r 10 306	9 574	r 732	17.8	30.9
May	1 986	3 073	-1 087	r 10 696	r 9 979	r 717	18.6	30.8
June r	1 980	2 818	-839	10 621	9 511	1 110	18.6	29.6
July r	1 895	2 972	-1 077	10 590	9 720	870	17.9	30.6
August r	2 002	3 419	-1 417	10 510	10 615	-106	19.1	32.2
September	1 933	2 956	-1 023	10 626	9 694	932	18.2	30.5
October	2 110	3 517	-1 407	10 833	11 530	-697	19.5	30.5
November	1 668	3 339	-1 671	10 159	10 485	-326	16.4	31.8

(a) Victorian imports are those imported goods released from Customs control within Victoria. Victorian exports are those whose final stage of production or manufacture occurred within Victoria.

Source: International Merchandise Imports (Cat. no. 5439.0); ABS data available on request, International Merchandise Trade collection.

Country	1999-2000		2000-01		Five months ending November 2001	
	Exports	Imports	Exports	Imports	Exports	Imports
	\$m	\$m	\$m	\$m	\$m	\$m
Belgium-Luxembourg	110	258	168	275	46	110
Brazil	46	105	70	123	23	56
Canada	135	445	195	412	82	145
China	1 124	3 029	1 430	3 891	622	1 978
Fiji	286	194	361	142	125	64
Finland	9	187	10	227	5	96
France	136	622	156	748	68	359
Germany	397	2 402	507	2 585	169	1 233
Hong Kong (SAR of China)	945	403	1 062	408	486	222
India	193	262	220	291	107	150
Indonesia	295	893	391	1 049	229	515
Italy	332	1 036	464	1 028	176	470
Japan	1 860	4 416	2 247	4 828	893	2 218
Korea, Republic of (South)	1 236	870	r 1 305	1 065	503	391
Malaysia	514	1 118	531	1 037	240	453
Mexico	74	111	157	130	71	52
Netherlands	105	318	150	302	48	171
New Zealand	2 297	1 491	r 1 876	1 535	888	803
Pakistan	56	85	76	112	17	40
Papua New Guinea	139	67	145	22	53	6
Philippines	385	163	474	175	223	74
Saudi Arabia	704	221	1 206	314	637	68
Singapore	1 475	632	r 1 518	685	520	327
South Africa	229	166	204	208	99	109
Sweden	29	607	28	541	15	175
Switzerland	40	319	47	342	19	161
Taiwan	835	922	816	959	264	419
Thailand	439	673	491	802	233	351
United Kingdom	694	1 793	696	1 842	221	813
United States of America	1 630	7 701	2 073	r 7 377	984	3 018
Other and unknown	2 286	2 205	3 431	3 029	1 544	1 154
Total(c)	19 034	33 717	r 22 506	r 36 485	9 609	16 203

(a) Victorian imports are those imported goods released from Customs control within Victoria. Victorian exports are those whose final stage of production or manufacture occurred within Victoria.

(b) The list of countries in this table reflects the volume of trade with Victoria.

(c) Any discrepancies between sums of component items and the total are due to rounding.

Source: ABS data available on request, International Merchandise Trade collection.

	Proportion of days per quarter with Air Quality Index(a) at stated level(b)								
	1999(c)				2000(c)				2001(c)(d)
	Mar	Jun	Sep	Dec	Mar	Jun	Sep	Dec	Mar
	%	%	%	%	%	%	%	%	%
West(e)									
Very Good	34	40	39	43	44	45	35	38	39
Good	44	40	48	50	47	41	49	54	48
Fair	16	14	11	5	8	7	13	7	10
Poor	4	7	2	—	—	4	1	1	2
Very Poor	1	—	—	1	1	3	2	—	1
East(e)									
Very Good	33	18	22	55	46	27	38	63	43
Good	49	48	53	42	46	47	32	34	45
Fair	18	24	17	2	7	12	15	3	9
Poor	—	9	5	—	—	10	11	—	1
Very Poor	—	1	2	—	1	3	4	—	2
City(e)									
Very Good	51	34	55	70	54	57	73	80	48
Good	40	49	34	26	43	32	23	18	47
Fair	6	9	9	4	2	5	2	1	2
Poor	3	8	2	—	1	3	1	—	1
Very Poor	—	—	—	—	—	2	1	—	2
Geelong(e)									
Very Good	71	46	58	75	68	67	64	71	52
Good	24	35	29	24	32	24	29	29	40
Fair	4	16	13	1	—	2	7	—	7
Poor	—	2	—	—	—	5	—	—	1
Very Poor	—	—	—	—	—	1	—	—	—
Latrobe Valley(e)									
Very Good	37	20	17	76	47	15	27	59	35
Good	54	41	55	23	49	56	50	41	53
Fair	7	24	20	—	1	21	20	—	9
Poor	2	14	4	—	2	7	3	—	3
Very Poor	—	1	3	1	—	1	—	—	—

(a) The EPA reports air quality as an index for any given pollutant as its concentration expressed as a percentage of the relevant standard. It enables easy interpretation of whether the pollutant is at a level which may cause harm. An index value of 100 means the pollutant is currently at a concentration equal to the National Environment Protection Measure (Air NEPM) or State Environment Protection Policy (The Air Environment) (SEPP) standard levels (levels designed to protect human health and the environment). Indexes are calculated separately for each measured pollutant: Ozone, Nitrogen Dioxide, Sulfur Dioxide, Carbon Monoxide, Fine Particulates (PM10), Visibility (Airborne Particle Index). Note that not all pollutants are measured at each station. The station index is the maximum of these individual indexes.

(b) The index is converted into a qualitative scale with 5 commonly understood terms — Very Good (0–33), Good (34–66) and Fair (67–99), (which represent measurements within the health standards) while Poor (100–149) and Very Poor (150+) represent measurements exceeding the health standards.

(c) Indexes provided for 1999 have been calculated using the full suite of pollutants listed above. The Air Quality Index for 2001 has been calculated on the same basis as the 2000 data, i.e. based only on the pollutant indexes for Ozone and API (Airborne Particle Index). These, however, are the dominant pollutants and are widely measured across the EPA network. Therefore while the data is not directly comparable across years the major trends should be similar. It should also be noted that meteorological conditions are a major determinant on the incidence of elevated pollutant levels. Hence significant daily, seasonal and annual variations can be expected in air quality. For more information on Air Quality, see the EPA website <www.epa.vic.gov.au>.

(d) Data for the East and West region for Mar qtr 2001 is provisional as data validation for the Point Cook and Dandenong air monitoring stations have not been completed.

(e) For reporting purposes the Port Phillip Region (PPR) has been divided into 4 regions: East, West, City and Geelong. Air monitoring stations assigned to each region are: East — Alphington, Brighton, Box Hill, Dandenong; City — RMIT, Richmond; West — Footscray, Mount Cottrell, Point Cook, Paisley; Geelong — Point Henry, Geelong South. In addition, the Latrobe Valley has stations at Moe and Traralgon. The regional index is considered to be the maximum of the station indexes calculated within each particular region. The daily index reported for a region is the maximum region index recorded each day.

Source: Environment Protection Authority, Victoria.

Basin	Capacity at full service level ML	Storage levels (percent of capacity)						% change from	
		Oct 2000	Nov 2000	Dec 2000	Oct 2001	Nov 2001	Dec 2001	Nov 2001 to Dec 2001	Dec 2000 to Dec 2001
Goulburn	3 833 500	52.9	57.2	51.9	46.4	45.7	40.4	-11.6	-22.2
Broken	405 000	76.4	72.2	68.1	67.3	65.6	59.8	-8.8	-12.2
Campaspe	387 060	81.2	97.1	91.7	66.3	63.1	60.3	-4.4	-34.2
Loddon	284 300	88.5	93.2	88.3	60.7	59.2	57.7	-2.5	-34.6
Murray	7 113 210	86.3	87.0	80.7	83.8	84.0	78.3	-6.8	-3.0
Ovens	37 500	85.2	92.2	91.9	91.8	91.5	90.9	-0.7	-1.1
Werribee	76 020	80.3	87.7	81.5	79.6	80.5	78.7	-2.2	-3.4
Maribyrnong	24 900	30.0	42.2	40.5	33.5	32.9	32.1	-2.4	-20.7
Glenelg/Wimmera	770 410	17.6	18.8	16.5	25.3	26.0	25.2	-3.1	52.7
Thomson/Latrobe	1 466 200	63.2	65.1	61.8	62.3	64.5	64.3	-0.3	4.0
Total	14 398 100	70.9	73.1	67.8	67.0	67.1	62.5	-6.9	-7.8
Total Volume of Water									
In Melbourne Water storages(a)	1 772 500	60.7	62.8	61.1	57.2	59.4	59.0	-0.7	-3.4
In rural water authority storages(b)	9 773 495	67.4	70.1	64.5	62.8	62.5	57.7	-7.7	-10.5

(a) The total volume in Melbourne Water storages is calculated as the sum of volumes in store in Thomson, Upper Yarra, O'Shannassy, Maroondah, Sugarloaf, Yan Yean, Greenvale, Silvan and Cardinia (Tarago and Devil bend are excluded).

(b) The total volume in rural water authority storages is calculated (as an approximation) as the sum of volumes in store for all listed storages, minus the volume in Thomson reservoir, minus half of the volume stored in the Murray Basin.

Source: Department of Natural Resources and Environment website <www.nre.vic.gov.au/vro>.

FOR MORE INFORMATION...

- INTERNET* **www.abs.gov.au** the ABS web site is the best place to start for access to summary data from our latest publications, information about the ABS, advice about upcoming releases, our catalogue, and Australia Now—a statistical profile.
- LIBRARY* A range of ABS publications is available from public and tertiary libraries Australia-wide. Contact your nearest library to determine whether it has the ABS statistics you require, or visit our web site for a list of libraries.
- CPI INFOLINE* For current and historical Consumer Price Index data, call 1902 981 074 (call cost 77c per minute).
- DIAL-A-STATISTIC* For the latest figures for National Accounts, Balance of Payments, Labour Force, Average Weekly Earnings, Estimated Resident Population and the Consumer Price Index call 1900 986 400 (call cost 77c per minute).

INFORMATION SERVICE

Data which have been published and can be provided within five minutes are free of charge. Our information consultants can also help you to access the full range of ABS information—ABS user-pays services can be tailored to your needs, time frame and budget. Publications may be purchased. Specialists are on hand to help you with analytical or methodological advice.

- PHONE* **1300 135 070**
- EMAIL* **client.services@abs.gov.au**
- FAX* 1300 135 211
- POST* Client Services, ABS, GPO Box 796, Sydney 1041

WHY NOT SUBSCRIBE?

ABS subscription services provide regular, convenient and prompt deliveries of ABS publications and products as they are released. Email delivery of monthly and quarterly publications is available.

- PHONE* 1300 366 323
- EMAIL* subscriptions@abs.gov.au
- FAX* 03 9615 7848
- POST* Subscription Services, ABS, GPO Box 2796Y, Melbourne 3001



2136720012011
ISSN 1445-6710

RRP \$24.00